



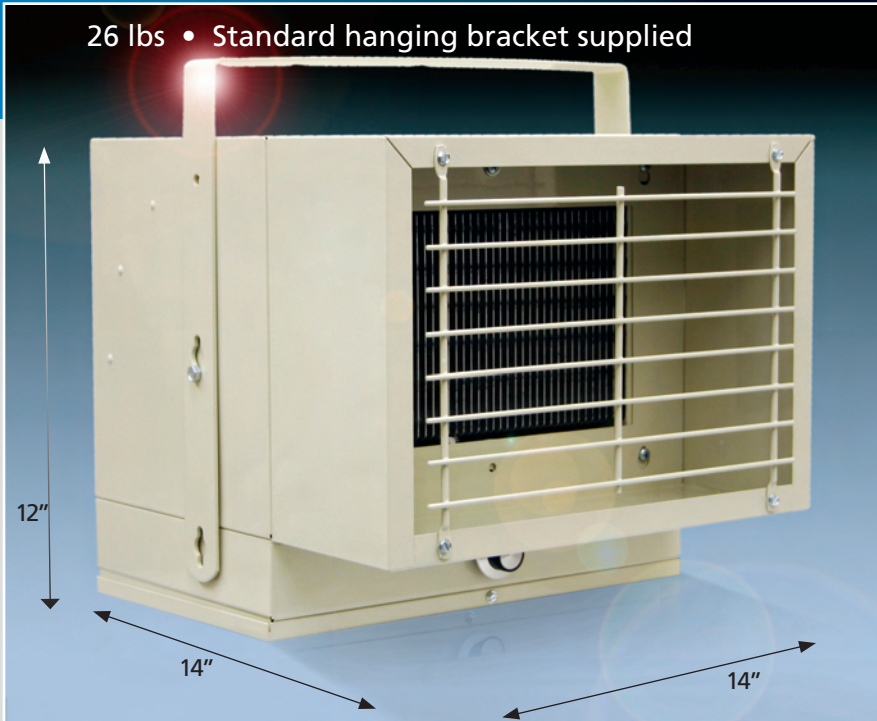
A Marley Engineered Products Brand

Compact Freeze Protection Unit Heater

PHFP25



26 lbs • Standard hanging bracket supplied



Concealed Space Use
Zero Clearance
Plenum Rated

Model PHFP25 is a unique application heater approved for installation in a concealed space, an area between a finished ceiling and drop ceiling, a plenum space, or inside a plenum. It may be installed in areas that are not readily accessible and may be installed for freeze protection.

18 ga. all steel casing with neutral grey polyester powder coat finish for corrosion protection

Easy to install using the hanging bracket supplied

Steel finned low watt density element. Fins and elements are arranged in a uniform grid pattern to assure that all incoming air passes through the heating element.

High limit thermal cutout automatically shuts off current in the event of overheating and reactivates the heater when temperature returns to normal.

Fan delay control

Optional alarm (240V) to alert automatic thermal limit tripped. Model AFL240

ETL Listed - Control number 9900268

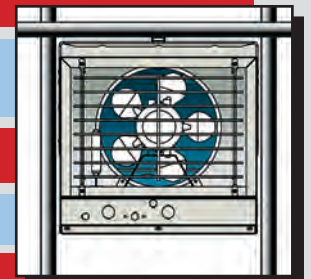
Built-in, heavy duty, contactor/relay

Control Box gasketed to keep out moisture and dust. NEMA 12 construction

Fan motor is totally enclosed, permanently lubricated and thermally protected

Great air throw

Single Point field wiring connection



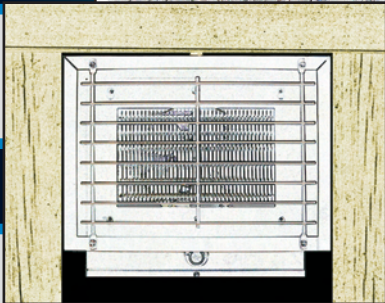


Compact

- Axial fan design allows for smaller unit size
- Dimensions: 12"H X 14"W X 14"L • Weight: 26 lbs.
- Standard hanging bracket supplied
- Can also be installed with threaded rod

Agency Approvals

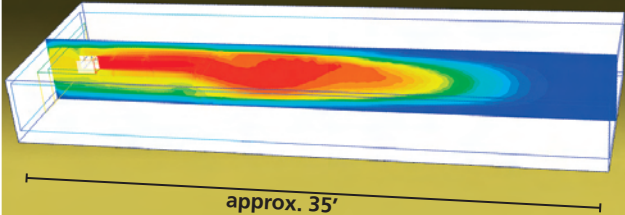
Model PHFP25 is design certified by ETL to comply with Standard for Heating and Cooling Equipment ANSI/UL 1995 and CAN/CSA No. 236-05, third edition. Meets stringent City of Chicago codes for plenum use.



Zero clearance capable

Model PHFP25 is rated for zero clearance to any surface mounted next to the sides, top, and bottom of the metal cabinet. The rear (entry air) and front (exit air) must have the proper clearances stated in the installation manual.

Air flow diagram is example only of heat dispersement in a typical plenum.

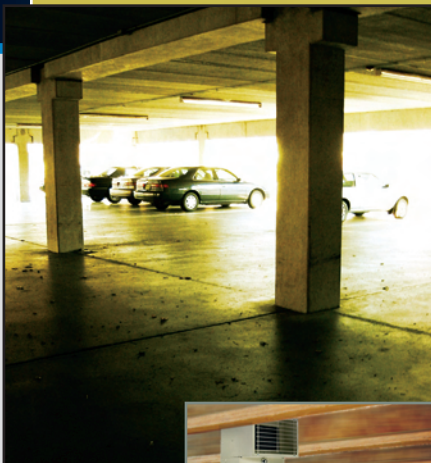


Effective



- Output: 2500 Watts

Versatile



This unit is designed for light commercial and residential use and costs less to operate than larger plenum heaters. It may be installed inside a plenum, plenum space, concealed space between a finished ceiling and drop ceiling or in any open space above a ceiling or below a floor that is used as an air plenum. Perfect for parking garage ceilings, industrial space heating, or crawl spaces.

Steel finned low watt density element. **5 year warranty**

Standard hanging bracket supplied

High limit thermal cutout

Totally enclosed motor

Gasketed control cover

Powder coat finish

PHFP25 Specifications - Ratings @ 0.2" S.P.

VOLTS	HZ	KW	PHASE	BTUH	CFM	FPM	RISE	AMPS
240	50/60	2.5	1	8530	150	1880	60°F	10.7
208	50/60	1.9	1	6398	130	1880	46°F	9.42

(Thermostat temperature range: 40°F to 90°F with positive off)



3233 W Hunting Park Avenue, Philadelphia PA 19132-1845
 (800) 79-ROYAL (215) 221-1200 fax (215) 221-1201
 advisors@royalelectric.com www.royalelectric.com

WE GET IT
 24/7 Emergency Material Access