



3233 W Hunting Park Avenue, Philadelphia PA 19132-1845  
(800) 79-ROYAL (215) 221-1200 fax (215) 221-1201  
advisors@royalelectric.com www.royalelectric.com

**WE GET IT**  
24/7 Emergency Material Access

# Electronic Time Switches



***Air Conditioners***      **Bell Ringing**

***Office Lightin***      Water Heaters

***Signs***      Parking Lot Lighting

**Ventilation Systems**

Outdoor      **Billboards**

# Building Automation Systems (BAS)

*Energy savings has become an international currency.*

Industries and businesses around the world are looking for practical and cost-effective methods to save energy and money. That's why Intermatic is taking the initiative to help your business use energy efficiently and ultimately save money with its Building Automation System (BAS) solutions.

These systems provide practical energy saving solutions for businesses across the globe. They help centralize energy management controls in buildings to maximize efficiency and performance.

Building automation systems integrate existing energy controls into energy conscious solutions. This is a vital part of reducing energy consumption. Most energy control products are designed to outdo the competition and not serve the business. Intermatic's BAS solutions are designed to meet the customer needs today and in the future.

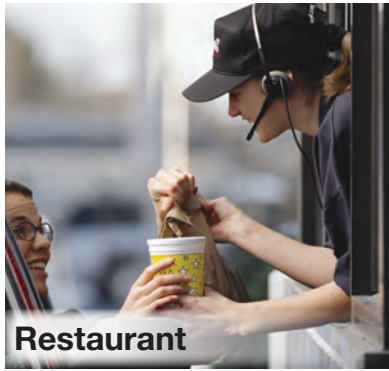
*Why waste another dollar on inefficient energy control systems?*

Let Intermatic give you the cost-effective solutions for your building.

## Common Components Controlled by a Building Automation System

- Indoor Lighting
- Outdoor Lighting
- HVACR Equipment
- Pump Controls
- Irrigation Controls
- Water Heating Equipment
- Signals/Alarms
- Security Controls
- Food Preparation

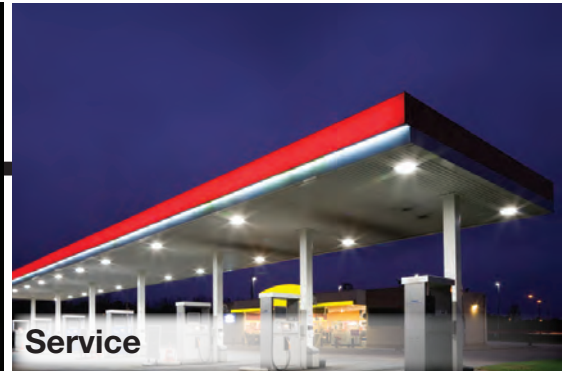
# Imagine all the Possibilities



Restaurant



Signage



Service



Retail



Alarm



Lobby



Facilities



Outdoor Lighting



Parking Area



Educational



Office

# Introducing the New ET90000 Series Energy Controls



## Are you tired of stopping at every timer to update software?

The ET90000's USB connection and Ethernet capabilities enable in-field schedule updates and firmware upgrades to be installed from one central location.

### ET90000 Series 365-Day Astronomic Time Switches



- Automatically detects input voltages between 120 and 277 VAC
- Up to 4,000 events plus holidays scheduling
- USB connection for easy program transfer, schedule backup, and firmware updates
- Ethernet capable for upgrading firmware and networking time switches and PC tools
- Up to 8 external overrides for remote circuit control
- 100+ hour supercapacitor maintains date and time in case of power outage
- Easy-to-follow on-screen menu
- Supports relative dates, such as "4th Thursday of November"
- Password protection
- Firmware upgradeable
- Schedule review mode
- Saved activity log

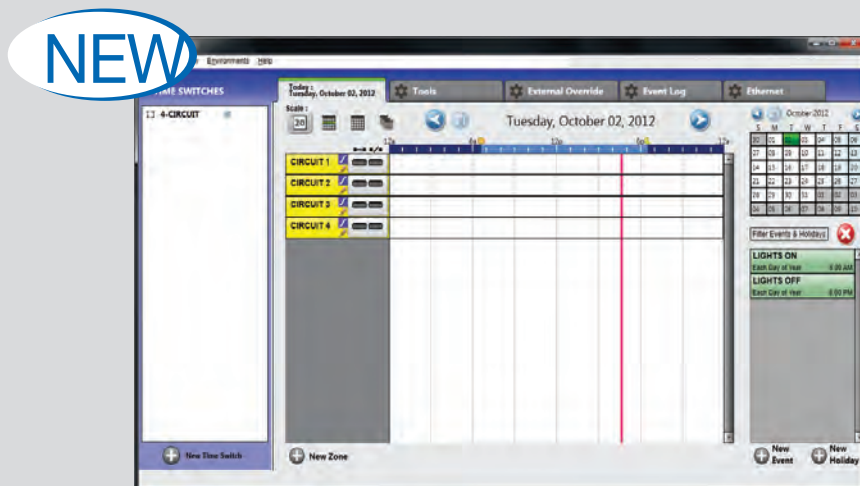
Load Type	Normally Open N.O.	Normally Closed N.C.	Voltage
General Purpose & Resistive	30 A	—	12-240 VAC
General Purpose & Resistive	20 A	10 A	12-240 VAC
Resistive	20 A	10 A	28 VDC
Inductive Ballast	20 A	3 A	120-277 VAC
Tungsten	5 A	—	12-120 VAC
Pilot Duty	470 VA	275 VA	120-240 VAC
Motor	1 HP	¼ HP	120 VAC
Motor	2 HP	½ HP	240 VAC

<p><b>Ratings:</b>  <b>Note:</b> The electronic mechanism snaps into the standard Intermatic enclosure for easy upgrading of mechanical mechanisms, if desired.  <b>Cycle:</b> 50/60 Hz.  <b>Wiring Terminals:</b> #20 to #6 AWG wire  <b>Min. ON/OFF Times:</b> 1 second  <b>Max. ON/OFF Times:</b> 365 days  <b>Operating Temperature:</b> -40°F to 104°F (-40°C to 40°C)  <b>Warranty:</b> Limited 1 year</p>
--

Model #	Circuits	Enclosure	Ethernet
ET90115C	1	Type 1 Steel	Optional
ET90115CE	1	Type 1 Steel	Included
ET90115CR	1	Type 3R Steel	Optional
ET90115CRE	1	Type 3R Steel	Included
ET90115M*	1	—	Optional
ET90215C	2	Type 1 Steel	Optional
ET90215CE	2	Type 1 Steel	Included
ET90215CR	2	Type 3R Steel	Optional
ET90215CRE	2	Type 3R Steel	Included
ET90215M*	2	—	Optional
ET90415CR	4	Type 3R Steel	Included
ET90815CR	8	Type 3R Steel	Included
ET91215CR	12	Type 3R Steel	Included
ET91615CR	16	Type 3R Steel	Included

\*Replacements for 1 & 2 circuits only  
 See Replacement Enclosures 2T2040GA & 2T511GA on Page 148

# Control Your ET90000 Remotely!



The new ET90000 PC Application gives you remote control of your device from any location. Gain real-time remote control of circuits, perform firmware updates, or download events, zones, and holidays anywhere! The PC App is great for creating schedules before, during, or after installation.

## ET90000 Series Accessories



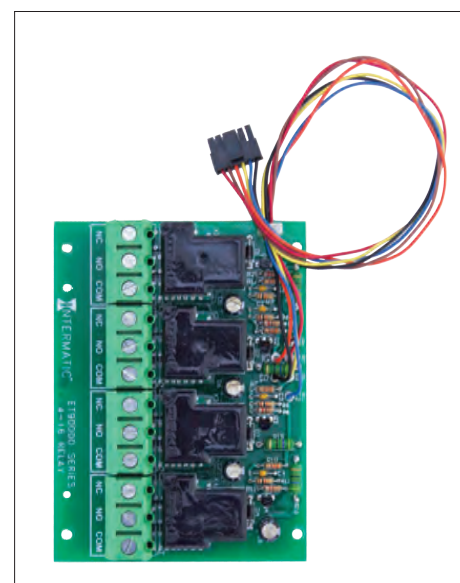
The ET9100 Replacement Door Assembly includes a display, keypad, Ethernet, and remote override connections. The door assembly can be replaced without installing a new panel or rewiring any circuits. The replacement door is for use with the ET90415CR, ET90815CR, ET91215CR, and ET91615CR.

Model #	Description
ET9100	Door Assembly



Extend the versatility of the ET90000 series with remote control over Ethernet. This module can be used as an upgrade or replacement part to enable ET90000 series controllers to be configured, monitored, and controlled remotely with software for the PC. Works with all ET90000 models.

Model #	Description
ET9232	Ethernet Module



The ET9250 Relay Module can be used as a replacement part or for upgrading the number of circuits in the ET90000 controller. The relay module comes in 4-circuit packs for upgrading to a maximum of 16 circuits. Each module includes four SPDT 30 Amp relays, to be used with ET90415CR, ET90815CR, ET91215CR, and ET91615CR.

Model #	Description
ET9250	Relay Module

# Manage Intuitively

The ET8415 7-Day Astronomic Time Switch is the ultimate tool for energy management. Complete with 4-circuit control to cover different areas of your facility, the ET8415 features easy-to-use, to-the-minute programming for reduced energy costs. Just name the application and the ET8415CR is in tune with your facility demands.

NEW

## ET8415CR 7-Day Astronomic Time Switch



- Automatically adjusts voltages between 120 and 277 VAC, 50/60Hz
- 56 ON/OFF events per week
- 8 astronomic events
- 100+ hour supercapacitor maintains time and date after power loss
- To-the-minute accuracy
- Temporary override or permanent manual override
- Automatic Daylight Saving Time adjustment

Model #	Circuits	Enclosure
ET8415CR	4 x SPST	Type 3R Steel Indoor/Outdoor

### Ratings:

**Note:** The electronic mechanism snaps into Intermatic enclosure 2T511GA, replacing mechanical mechanisms, if desired.

**Input Voltage:** 120/208/240/277 VAC

**Cycle:** 50/60 Hz.

**Switch Rating:** 30 Amp Inductive/Resistive, 120, 240 VAC, 20 Amp Resistive, 28 VDC, 1 HP, 120 VAC, 2 HP, 240 VAC, 5 Amp Tungsten, 120-240 VAC, 20 Amp Ballast, 120-277 VAC

**Wiring Terminals:** #18 to #10 AWG wire

**Min. ON/OFF Times:** 1 minute

**Max. ON/OFF Times:** 6 days 23 hours 59 minutes

**Warranty:** Limited 1 year



## Common ET8415 Applications

- Indoor Lighting
- Outdoor Lighting
- Bell Ringing
- Billboard Lighting
- Gas Stations
- Security Lighting

# Meet Your New Time Switch!

Our mission is to help you find the ET Series time switch that meets your demands. Simply create your time switch profile in 3 easy steps and then find your perfect match

The versatile 24-Hour, 7-Day ET series time switches feature one SPST circuit, one SPDT circuit, or two SPST circuits. They can be installed in an indoor or rainproof enclosure or shipped as a mechanism only.

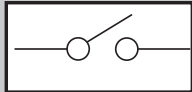
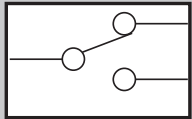
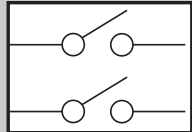
You name the application and we'll deliver the practical solution for you!

## Find Your Time Switch Match in 3 Easy Steps!

**1** Choose your schedule from these options:

24-Hour
7-Day
7-Day Astronomic

**2** Choose your circuit/switch type from these options:

One SPST Circuit	
One SPDT Circuit	
Two SPST Circuits	

**3** Choose your enclosure from these options:

Indoor Type 1 Steel
Outdoor Type 3R Plastic
Outdoor Type 3R Steel
Mechanism Only

Find the time switch that matches your profile from the table on the next page!





Indoor Type 1 Steel



Outdoor Type 3R Plastic



Outdoor Type 3R Steel

**ET Series  
Time Switches**



- Automatic Daylight Saving Time adjustment
- Temporary and permanent manual overrides
- To-the-minute programming accuracy
- Field-replaceable 3-year battery backup
- Astronomic programming can be combined with independent programs to provide a sunset ON and time OFF program
- 28 setpoints (14 ON/OFF per channel)

**24-Hour Schedule**

1 Circuit SPST Switch	
Model #	Enclosure
ET1105CM	-
ET1105C	Indoor Type 1 Steel
ET1105CPD82	Outdoor Type 3R Plastic
ET1105CR	Outdoor Type 3R Steel

1 Circuit SPDT Switch	
Model #	Enclosure
ET1115CM	-
ET1115C	Indoor Type 1 Steel
ET1115CPD82	Outdoor Type 3R Plastic
ET1115CR	Outdoor Type 3R Steel

2 Circuits SPST Switch	
Model #	Enclosure
ET1125CM	-
ET1125C	Indoor Type 1 Steel
ET1125CPD82	Outdoor Type 3R Plastic
ET1125CR	Outdoor Type 3R Steel

**7-Day Schedule**

1 Circuit SPST Switch	
Model #	Enclosure
ET1705CM	-
ET1705C	Indoor Type 1 Steel
ET1705CPD82	Outdoor Type 3R Plastic
ET1705CR	Outdoor Type 3R Steel

1 Circuit SPDT Switch	
Model #	Enclosure
ET1715CM	-
ET1715C	Indoor Type 1 Steel
ET1715CPD82	Outdoor Type 3R Plastic
ET1715CR	Outdoor Type 3R Steel

2 Circuits SPST Switch	
Model #	Enclosure
ET1725CM	-
ET1725C	Indoor Type 1 Steel
ET1725CPD82	Outdoor Type 3R Plastic
ET1725CR	Outdoor Type 3R Steel

**7-Day Schedule Astronomic**

1 Circuit SPST Switch	
Model #	Enclosure
ET8015CM	-
ET8015C	Indoor Type 1 Steel
ET8015CPD82	Outdoor Type 3R Plastic
ET8015CR	Outdoor Type 3R Steel

1 Circuit SPDT Switch	
Model #	Enclosure
ET8115CM	-
ET8115C	Indoor Type 1 Steel
ET8115CPD82	Outdoor Type 3R Plastic
ET8115CR	Outdoor Type 3R Steel

2 Circuits SPST Switch	
Model #	Enclosure
ET8215CM	-
ET8215C	Indoor Type 1 Steel
ET8215CPD82	Outdoor Type 3R Plastic
ET8215CR	Outdoor Type 3R Steel

See Accessories/enclosures on Page 146

**Ratings:**

**Note:** The electronic mechanism snaps into Intermatic time switch enclosure models 2T2040GA, 2T511GA, 2T2500GA, and 2T2926A, replacing mechanical mechanisms, if desired.

**Input Voltage:** 120/208/240/277 VAC

**Cycle:** 50/60 Hz.

**Switch Rating:** 30 A Inductive/Resistive, 120/240 VAC, 20 A Resistive, 28 VDC, 1 HP, 120 VAC, 2 HP, 240 VAC, 5 A Tungsten, 120/240 VAC, 20 A Ballast, 120-277 VAC

**SPDT models Normally Open (NO), Normally Closed (NC) contact ratings:** 20 A (NO), 10 A (NC) Resistive/Inductive, 120/240 VAC, 1 HP (NO), ¼ HP (NC), 120 VAC, 2 HP (NO), ½ HP (NC), 240 VAC, 5 A Tungsten (NO), 120/240 VAC, 20 A (NO), 3 A (NC) Ballast, 120-277 VAC

**Simultaneous Feature:** 2-circuit models can be configured for simultaneous (DPST) operation.

**Pulse Feature:** 2-circuit models feature 2-second pulse option for contactor and bell ringing applications

**Wiring Terminals:** #18 to #10 AWG wire

**Min. ON/OFF Times:** 1 minute

**Max. ON/OFF Times:** 23 hours 59 minutes for 24-Hour models, 6 days 23 hours 59 minutes for 7-Day models

**Warranty:** Limited 1 year

# Having Trouble Keeping Track of Your Maintenance Schedule? Count On The Pro

The Talento882 DIN Rail timer's hour meter and service indicator keeps you in tune with your application so you avoid costly service interruptions. Whether it's a lighting panel, boiler, water treatment control, irrigation pump, or other heavy-duty industrial application, the Talento882 removes the guesswork from your service schedule.



## TalentoPro

**Digital DIN Rail Mount 365-Day Time Switch with Intelligent Scheduling**



- Cumulative load monitoring hour counter with service indicator keeps track of runtime for maintenance schedules
- Automatically detects and adjusts input voltages (24 VAC/VDC through 240 VAC)
- Non-volatile memory (EEPROM)
- Random program switching function
- Assignable external input for countdown, override, or pulse function
- Weekly, Annual, and Holiday program scheduling (ON/OFF, Pulse, Cycle)
- Backlit LCD with load status indicator
- Automatic Daylight Saving Time adjustment
- Astronomic program scheduling (with OFF time capability)
- 400 memory spaces
- Replaceable battery provides backup with a 10-year carryover
- Shortest switching time: 1 second
- Manual switch: Automatic/Override/Fix ON/OFF
- Security features include lockable keypad cover and PIN code
- 2-circuit independent programming
- Optional PC Data transfer via IR remote interface (Talento Taxxi-P)

Model #	Circuits	Input Voltage
Talento882	2	24 VAC/VDC, 120-240 VAC, 50/60Hz

### Ratings:

**Power Consumption:** 3.7 VA  
**Switch Type:** Circuit 1 SPDT, Circuit 2 SPST  
**N.O. and N.C. Contacts:** 240 VAC, 16 A Resistive, 10 A General Purpose, 10 A Tungsten, 8 A Ballast, Pilot Duty B300  
**Wire Connections:** Screw Terminals for #16 to #10 AWG  
**Dimensions:** 3.35" H x 1.38" W (85 mm H x 35 mm W)  
**Warranty:** 1 year

# Spending Too Much Time Updating Your Timers? Hail the Talento Taxxi

Streamline the programming process in your facility with the Talento Taxxi Dialog Set. Simply create schedules from your PC and then transfer the data via the hand-held programmer to each Talento882 or Talento890 Series.



## Remote Programming in 4 Easy Steps:

1. Load the CD-ROM into your PC.
2. Program your fixed, holiday, and astronomic schedules from your PC.
3. Transfer programs to the hand-held programmer.
4. Transfer programs at each Talento timer via the programmer's infrared interface.

### Talento Taxxi includes:

- Windows-based software
- Hand-held programmer
- CD-ROM
- USB Interconnect cable

## Talento Taxxi Remote PC Programmer

- Astronomic programming
- Fixed and floating holidays
- Stores up to 4 independent schedules

Model #	Description	Qty.
TalentoTaxxi	Hand-held remote programming tool for Talento890 Series	1
TalentoTaxxi-P	Hand-held remote programming tool for Talento882	1

### Mechanism Only, DIN Rail Mounting

Model #	Circuits	Input Voltage
Talento891-24*	1	24 VAC, 50/60 Hz
Talento892-24*	2	24 VAC, 50/60 Hz
Talento894-120*	4	120 VAC, 50/60 Hz
Talento894-24*	4	24 VAC, 50/60 Hz

### Type 3R, Outdoor Enclosure Mounting

Model #	Circuits	Input Voltage
GMX894-0-120*	4	120 VAC, 50/60 Hz

### Type 1, Indoor Enclosure Mounting

Model #	Circuits	Input Voltage
GMX894-I-120*	4	120 VAC, 50/60 Hz

\*Limited stock available

#### Ratings:

Switch Type: SPDT  
 Switch Rating: 16 A Resistive, 250 VAC per circuit  
 Environmental Rating: -13°F to 131°F (-25°C to 55°C)  
 Mounting Surface: DIN Rail (Type 1 & 3R available)  
 Shortest Switching Time: 1 second



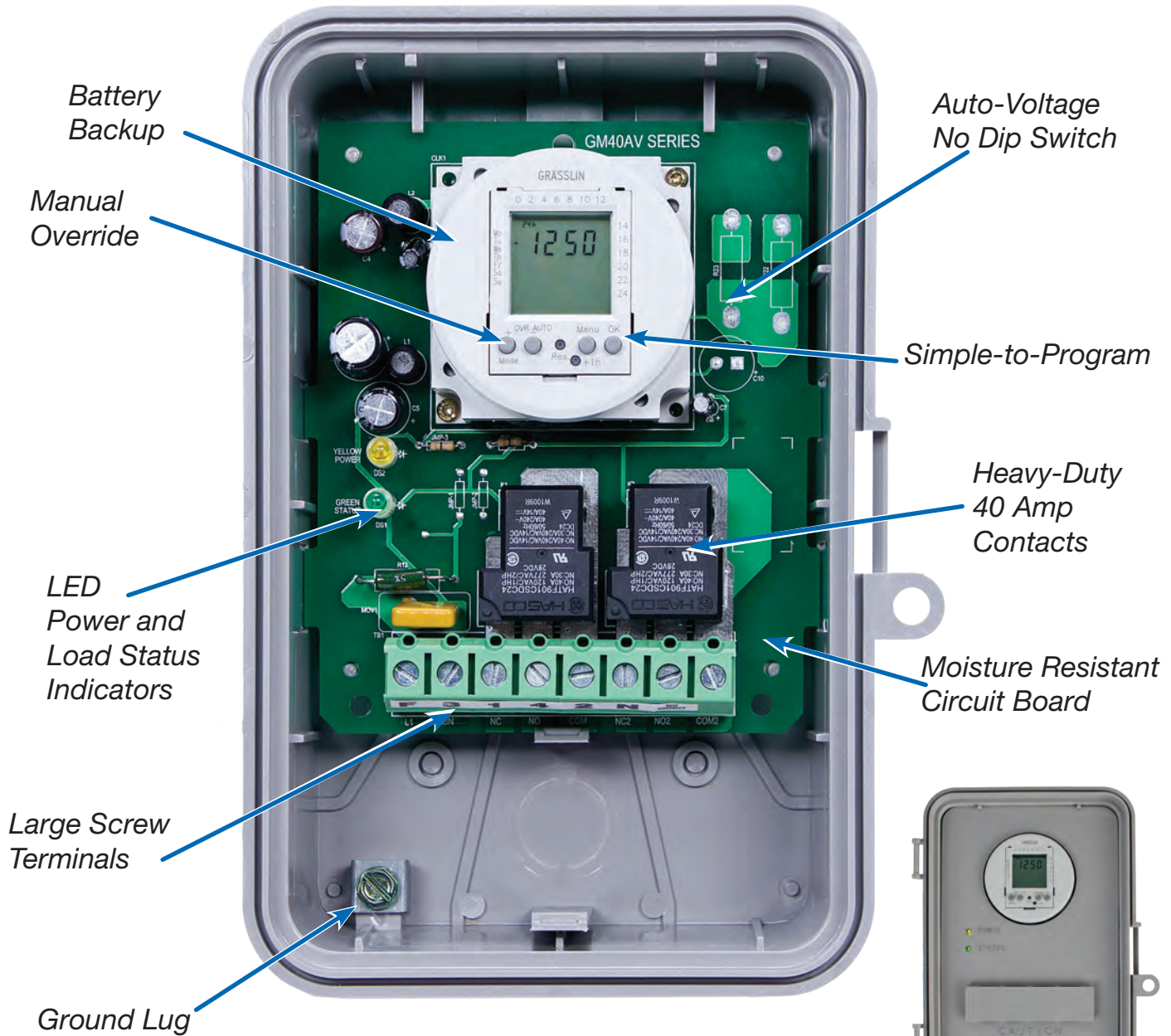
## Talento 800 Series Digital Din/Rail 365-Day Astronomic Timer Module



- Automatic Daylight Saving Time adjustment
- Programmable pulse events from 1 second or longer
- Cycle function is programmable for both total cycle duration and ON duration in minutes or seconds
- Non-volatile memory (EEPROM)
- Astronomic programming (via PC data transfer)
- 400 program spaces

[www.intermatic.com](http://www.intermatic.com)

# No Tools Required! Mechanism Snaps Into Alternative Enclosures



## GM40AVE 40 Amp Auto-Voltage Time Switch



- Automatically adjusts voltages between 120-277 VAC
- 24-Hour/7-Day flexible scheduling
- Power and Status LED indicators
- DPDT Switching Configuration (2 N.O. and 2 N.C. Contacts)
- 20 Setpoint programs
- Temporary Manual Override
- Lithium battery with 7-year carryover
- Type 3R enclosure with lockable hasp
- To-the-minute accuracy
- Heavy-duty 40 Amp contact rating

### Ratings:

#### N.O. Contacts:

40 A, Resistive, 120-277 VAC, 1 HP (16 FLA, 90 LRA), 120 VAC,  
2 HP (12FLA, 52LRA), 208-277 VAC, 30A, Ballast, 120 VAC,  
20 A, Ballast, 277 VAC, 15 A, Tungsten, 120 VAC

#### N.C. Contacts:

30 A, Resistive, 120-277 VAC, 1 HP (12 FLA, 30 LRA), 120 VAC,  
2 HP (10 FLA, 30 LRA), 240 VAC, 2 A, Tungsten, 120 VAC, 10 A, Ballast, 277 VAC

**Wiring Connections:** Screw box lug terminals up to (1) #8 AWG wire

**Operating Temperature:** -40°F to 131°F (-40°C to 55°C)

**Operating Humidity:** 0 to 95% RH, non-condensing

**Electrical Life:** 50,000 Operations at Full Load

**Warranty:** Limited 1 year

Model #	Input Voltage	Switch Type	Battery Backup
GM40AVE	120-277 VAC, 50/60 Hz	DPDT	Yes

For enclosure dimensions, see Page 151

## GMX/FM1 Series One and Two-Circuit Electronic Time Switches



- 24-Hour or 7-Day applications
- Finger-safe terminals
- Manual Daylight Saving Time adjustment (D20 Models)
- Auto Daylight Saving Time adjustment (D50 Models)
- Manual override with load status indication
- GMXFM1D50 & GMX2DFM50 available in 7 languages:  
English, German, French, Italian, Spanish, Dutch, and Portuguese
- Heavy-duty relay contacts for switching low or line voltage loads
- Enclosure provides space for field added contactor or other accessories



A.

1 Circuit				
Model #	Input Voltage	Setpoint Programs	Enclosure	Battery Backup Carryover
A. GMXFM1D20-I-120	120 VAC, 50/60 Hz	20	Type 1 Indoor	7 years
GMXFM1D20-I-24	24 VAC/VDC, 50/60 Hz	20	Type 1 Indoor	7 years
GMXFM1D20-I-240	240 VAC, 50/60 Hz	20	Type 1 Indoor	7 years
GMXFM1D50-I-12	12 VAC/VDC, 50/60 Hz	50	Type 1 Indoor	3 years
GMXFM1D50-I-120	120 VAC, 50/60 Hz	50	Type 1 Indoor	3 years
GMXFM1D50-I-24	24 VAC/VDC, 50/60 Hz	50	Type 1 Indoor	3 years
GMXFM1D50-I-240	240 VAC, 50/60 Hz	50	Type 1 Indoor	3 years
GMXFM1D20-O-120	120 VAC, 50/60 Hz	20	Type 3R Outdoor	7 years
GMXFM1D20-O-24	24 VAC/VDC, 50/60 Hz	20	Type 3R Outdoor	7 years
GMXFM1D20-O-240	240 VAC, 50/60 Hz	20	Type 3R Outdoor	7 years
GMXFM1D50-O-12	12 VAC/VDC, 50/60 Hz	50	Type 3R Outdoor	3 years
GMXFM1D50-O-120	120 VAC, 50/60 Hz	50	Type 3R Outdoor	3 years
2 Circuit				
Model #	Input Voltage	Setpoint Programs	Enclosure	Battery Backup Carryover
GMX2FM2D50I-120	120 VAC, 50/60 Hz	50	Type 1 Indoor	3 years
GMX2FM2D50I-24	24 VAC/VDC, 50/60 Hz	50	Type 1 Indoor	3 years
GMX2FM2D50I-240	240 VAC, 50/60 Hz	50	Type 1 Indoor	3 years
GMX2FM2D50O-120	120 VAC, 50/60 Hz	50	Type 3R Outdoor	3 years

<b>Ratings:</b>	<b>N.O. Contact</b>	<b>Warranty:</b> Limited 1 Year
Power Consumption: 4 VA	½ HP, 120 VAC	
Switch Type: SPDT relay	1 HP, 240 VAC	
Wiring Connections: Screw terminal connections	16 A, 277 VAC Resistive	
<b>N.C. Contact:</b>	12 A, 120 VAC, Ballast	
16 A, 277 VAC, Resistive	8 A, 240 VAC, Ballast	
8 A, 24 VDC	720 VA, 240 VAC, Pilot Duty	
360 VA, 120 VAC, Pilot Duty	360 VA, 120 VAC, Pilot Duty	
	600 W, 120 VAC, Tungsten	
	1000 W, 240 VAC, Tungsten	

For enclosure dimensions, see Page 151

**NEW**



Model #	Input Voltage
FM1D14-12U	12 VDC
FM1D14-24U	24 VAC/VDC, 50/60Hz
FM1D14-AV-U	120-277 VAC, 50/60Hz

NOTE: Clear dust cover order #DC-FME

### FM1D14 Series One-Circuit Panel Mount



- 24-Hour or 7-Day applications
- 14 setpoint programs
- Simple-to-use programming
- Manual override with status indication
- Rechargeable battery backup with industry-leading 2500-Hour carryover
- 5 preset adjustable block programs

**Ratings:**

**Power Consumption:** 1.4 W  
**Switch Type:** SPDT relay  
**N.O. Contact:**  
 15A, 277 VAC, General Use  
 10 FLA, 60 LRA, 250 VAC  
 ½ HP, 120 VAC, 1 HP, 250 VAC  
 1000 W, 120 VAC, Tungsten  
 8 A, 277 VAC, STD Ballast  
 B300 Pilot Duty  
 4.9 A, 120 VAC, Electronic Ballast

**N.C. Contact:**

15 A, 277 VAC, General Use  
 10 FLA, 60 LRA, 250 VAC  
 ½ HP, 120/240 VAC  
 12 A, 24 VDC, Resistive  
 8 A, 120 VAC, STD Ballast  
**Dimensions:**  
 2.36" x 2.36" (60 mm x 60 mm)  
**Wiring Connections:**  
 ¼" quick connect terminals  
**Operating Temperature:**  
 -40°F to 131°F (-40°C to 55°C)  
 (limited display function at -13°F)  
**Warranty:** 1-year limited



Model #	Input Voltage
FM2D50-24	24 VAC/VDC, 50/60 Hz
FM2D50-120	120 VAC, 50/60 Hz
FM2D50-240	240 VAC, 50/60 Hz

### FM2D50 Series Two-Circuit Surface and Flush Mount



- 24-Hour or 7-Day applications
- Screw terminals for #10 to #24 AWG
- Clear dust cover
- 50 setpoint programs
- Free weekday block formation
- Selectable languages: English, German, French, Italian, Spanish, Portuguese, and Dutch
- Auto Daylight Saving Time adjustment
- Easy-to-follow menu driven programming
- Manual override with load status indication
- Battery backup with 3-year carryover
- Each circuit operates independently or combined
- Heavy-duty relay contacts for switching low or line voltage loads

**Ratings:**

**Power Consumption:** 4 VA  
**Switch Type:** 2x SPDT Relay  
**N.O. and N.C. Contact:**  
 16 A, 277 VAC Resistive  
 ½ HP, 120 VAC, 1 HP, 240 VAC  
 12 A, Ballast 120 VAC, 8A, Ballast 240 VAC  
 720 VA, 240 VAC Pilot Duty 360 VA, 120 VAC Pilot Duty  
 600 W, Tungsten, 120 VAC 100 W, Tungsten 240 VAC  
**Wiring Connection:** Screw terminals for #10 to #24 AWG  
**Warranty:** 1 year



For DIN rail mounting, order MB-DIN (DIN Rail Mounting Base)  
 See Accessories on Page 153

**The FMD Series**  
**modules are ideal for**  
*HVAC, pumps, lighting, and other*  
*industrial and commercial equipment.*

**FM1D50 Series**  
**One-Circuit Surface/DIN Rail**  
**and Flush Mount**



- 50 setpoint programs
- Free weekday block formation
- Selectable languages: English, German, French, Italian, Spanish, Portuguese, and Dutch
- Auto Daylight Saving Time adjustment
- 24-Hour or 7-Day applications
- Easy-to-follow menu driven programming
- Manual override with load status indication
- Battery backup with 3-year carryover
- Heavy-duty relay contacts for switching low or line voltage loads

**A. Panel Mounting**

Model #	Input Voltage	Clear Dust Cover
<b>FM1D50-12U</b>	12 VAC/VDC, 50/60 Hz	No
<b>FM1D50-120U</b>	120 VAC, 50/60 Hz	No
<b>FM1D50-24U</b>	24 VAC/VDC, 50/60 Hz	No
<b>FM1D50-240U</b>	240 VAC, 50/60 Hz	No

Note: Clear dust cover order DC-FME

**B. Flush Mounting**

Model #	Input Voltage	Clear Dust Cover
<b>FM1D50E-12</b>	12 VAC/VDC, 50/60 Hz	Yes
<b>FM1D50E-120</b>	120 VAC, 50/60 Hz	Yes
<b>FM1D50E-24</b>	24 VAC/VDC, 50/60 Hz	Yes
<b>FM1D50E-240</b>	240 VAC, 50/60 Hz	Yes

**C. Surface/DIN Rail Mounting**

Model #	Input Voltage	Clear Dust Cover
<b>FM1D50A-12</b>	12 VAC/VDC, 50/60 Hz	Yes
<b>FM1D50A-120</b>	120 VAC, 50/60 Hz	Yes
<b>FM1D50A-24</b>	24 VAC/VDC, 50/60 Hz	Yes
<b>FM1D50A-240</b>	240 VAC, 50/60 Hz	Yes

**Ratings:**

**Power Consumption:** 4 VA  
**Switch Type:** SPDT Relay  
**N.O. Contact:**  
 ½ HP, 120 VAC  
 1 HP, 240 VAC  
 12 A, Ballast 120 VAC  
 8 A, Ballast 240 VAC  
 720 VA, 240 VAC Pilot Duty  
 360 VA, 120 VAC Pilot Duty  
 600 W, Tungsten 120 VAC  
 1000 W, Tungsten 240 VAC

**N.C. Contact:**

16 A, 277 VAC Resistive  
 8 A, 24 VDC  
 360 VA, 120 VAC Pilot Duty

**Dimensions:**

FM1D50A 2.83" W x 4" H (72 mm x 102.5 mm)  
 FM1D50E 2.83" W x 4" H (72 mm x 102.5 mm)  
 FM1D50 2.36" W x 2.36" H (60 mm x 60 mm)

**Wiring Configurations:**

FM1D50 and FM1D50E: ¼" quick connect terminals  
 FM1D50A: Screw terminals for #10 to #24 AWG wire

**Operation Temperature:** -13°F to 131°F  
 (-25°C to 55°C) (Limited display function at -13°F)

**Warranty:** 1 year



A.



B.



C.



A.



B.



C.

Perfect for controlling lighting, ventilation, heating, cooling, or other electrical loads in commercial and industrial applications.

## FM1D20 Series One-Circuit Electronic Time Switches



- 20 setpoint programs
- 3 preset adjustable block programs
- Daylight Saving Time adjustment
- 24-Hour or 7-Day applications
- Simple-to-use programming
- Manual override with load status indication
- Battery backup with 7-year carryover

### A. Panel Mounting

Model #	Input Voltage	Clear Dust Cover
FM1D20-120U	120 VAC, 50/60 Hz	No
FM1D20-24U	24 VAC/VDC, 50/60 Hz	No
FM1D20-240U	240 VAC, 50/60 Hz	No

### B. Flush Mounting

Model #	Input Voltage	Clear Dust Cover
FM1D20E-120	120 VAC, 50/60 Hz	Yes
FM1D20E-24	24 VAC/VDC, 50/60 Hz	Yes
FM1D20E-240	240 VAC, 50/60 Hz	Yes

### C. Surface / DIN Rail Mounting

Model #	Input Voltage	Clear Dust Cover
FM1D20A-120	120 VAC, 50/60 Hz	Yes
FM1D20A-24	24 VAC/VDC, 50/60 Hz	Yes
FM1D20A-240	240 VAC, 50/60 Hz	Yes

#### Ratings:

**Power Consumption:** 4 VA

**Switch Type:** SPDT Relay

#### N.O. Contact:

½ HP, 120 VAC

1 HP, 240 VAC

16 A, 277 VAC Resistive

12 A, Ballast 120 VAC

8 A, Ballast 240 VAC

720 VA, 240 VAC Pilot Duty

360 VA, 120 VAC Pilot Duty

600 W, Tungsten 120 VAC

1000 W, Tungsten 240 VAC

#### N.C. Contact:

16A, 277 VAC Resistive

8A, 24 VDC

360 VA, 120 VAC Pilot Duty

#### Dimensions:

FM1D20A: 2.83" W x 4" H (72 mm x 102.5 mm)

FM1D20E: 2.83" W x 2.83" H (72 mm x 72 mm)

FM1D20: 2.36" W x 2.36" H (60 mm x 60 mm)

#### Wiring Connections:

"A" Models: Screw terminals for #10 to #24 AWG Wire

"E" Models: ¼" Quick connect terminals

**Warranty:** 1 year



## EH10 and EH40 Electronic Water Heater Time Switches



- 42 ON/OFF events per week
- 7-day scheduling
- To-the-minute programming and time-keeping accuracy
- External override switch
- LED load indicator
- Replaceable battery backup

Model #	Input Voltage	Switch	Watts	Enclosure
EH10	120 VAC	SPST	3600	Type 1 Indoor Steel
D. EH40	240 VAC	DPST	7200	Type 1 Indoor Steel

### Ratings:

#### Switch Rating for EH10:

- 30 A Inductive, 120 VAC 60Hz
- 30 A Resistive, 120 VAC 60Hz
- 5 A Tungsten, 120 VAC, 1 HP, 120 VAC

#### Switch Rating for EH40:

- 30 A Inductive, 240 VAC 60Hz
- 30 A Resistive, 240 VAC 60Hz
- 5 A Tungsten, 240 VAC, 1 1/2 HP, 240 VAC



D.

## CT2000 Percentage Cycle Time Switch



- Provides 8 field selectable timer durations of 30 seconds, 1, 3, 5, 10, 30 minutes and 1 or 4 hours
- Front cover buttons enable true flexibility for repetitive cycle times
- Temporary and permanent manual overrides
- 30 separate positions enable precise percentage ON time selection
- User settings stored in non-volatile memory
- No DIP switches to program cycle time
- Functions in dusty, ammonia, and wash-down environments
- Withstands surges of up to 6,000 VAC
- Type 3R Indoor/Outdoor Aluminum Enclosure

Model #	Input Voltage	Switch
E. CT2000	120 or 240 VAC, 60 Hz	SPST

### Ratings:

- Resistive:** 20 A, 120/240 VAC, 28 VDC
- Motor:** 1 HP, 120 VAC, 2 HP, 240 VAC
- General Purpose:** 20 A, 240 VAC
- Tungsten (Incandescent):** 5 A, 240 VAC
- Pilot Duty:** 470 VA, 240 VAC
- Ballast (Fluorescent):** 10 A, 277 VAC
- Surge Protection:** up to 6,000 VAC
- Warranty:** Limited 1 year



E.