



**ROYAL ELECTRIC SUPPLY
COMPANY**

3233 W Hunting Park Avenue, Philadelphia PA 19132-1845
(800) 79-ROYAL (215) 221-1200 fax (215) 221-1201
advisors@royalelectric.com www.royalelectric.com

WE GET IT

24/7 Emergency Material Access



Make the switch to the Philips EvoKit LED Retrofit Kit

Available in 2'x2' and 2'x4' configurations



PHILIPS

Easy to install, energy efficient, and affordable... what's stopping you from making the move?



The Philips EvoKit LED Retrofit Kits are an energy efficient, easy to install solution to upgrade your fluorescent troffers to LED. Compatible with both standard and narrow T-grids, they offer a simple retrofit that will improve the look of your ceiling with its architectural styling without the need to actually break the ceiling plenum. The units also come standard with dimming capabilities, making them perfect for applications such as offices, classrooms, healthcare facilities, retail space and more.

The Philips EvoKit LED Retrofit Kits offer the latest advances in LED technology, resulting in quality lighting with extremely high efficacies of up to 110 lm/w. Both the 2'x2' and the 2'x4' EvoKit are manufactured with quality components and finishes, meaning a consistent, balanced lighting scheme when using both configurations in the same space. The main diffuser and slanted troffer help reduce glare and create a pleasant, uniform throw of the light. Combine the aesthetics and quality with the ease of installation, and this product can literally transform your space in minutes!

Specifications

2'x4'

Part Number	Description	Watts	Volts	Lumen Maintenance (Hrs.) ¹	Approx. Lumens ²	CRI	Color Temp. (K)
501817	EvoKit 2x4 P 42L 39W 835 2 0-10 7 G2	39	120-277	70,000	4180	80	3500
501866	EvoKit 2x4 P 42L 39W 840 2 0-10 7 G2	39	120-277	70,000	4280	80	4000
501874	EvoKit 2x4 P 42L 40W 835 1 Mk10 7 G2	40	120	70,000	4180	80	3500
501882	EvoKit 2x4 P 42L 40W 840 1 Mk10 7 G2	40	120	70,000	4280	80	4000
501924	EvoKit 2x4 P 42L 42W 835 5 Mk10 7 G2	42	277	70,000	4180	80	3500
501940	EvoKit 2x4 P 42L 42W 840 5 Mk10 7 G2	42	277	70,000	4280	80	4000

2'x2'

Part Number	Description	Watts	Volts	Lumen Maintenance (Hrs.) ¹	Approx. Lumens ²	CRI	Color Temp. (K)
501734	EvoKit 2x2 P 32L 31W 835 2 0-10 7 G2	31	120-277	70,000	3210	80	3500
501759	EvoKit 2x2 P 32L 31W 840 2 0-10 7 G2	31	120-277	70,000	3280	80	4000
501775	EvoKit 2x2 P 32L 32W 835 1 Mk10 7 G2	32	120	70,000	3210	80	3500
501783	EvoKit 2x2 P 32L 32W 840 1 Mk10 7 G2	32	120	70,000	3280	80	4000
501791	EvoKit 2x2 P 32L 34W 835 5 Mk10 7 G2	34	277	70,000	3210	80	3500
501809	EvoKit 2x2 P 32L 34W 840 5 Mk10 7 G2	34	277	70,000	3280	80	4000

1) L70 72,000 hours @ 35°C based on TM21 and LM80.

2) Based on photometric testing consistent with IES LM-79.

The EvoKit embodies the joining of style, efficiency and affordability

Philips EvoKit LED is an energy efficient LED alternative to traditional linear fluorescent troffers. Not only does it offer energy savings, it also reduces maintenance costs due to its long lifetime. Simple construction helps decrease the installation time meaning you can have an LED solution in your ceiling in just minutes.



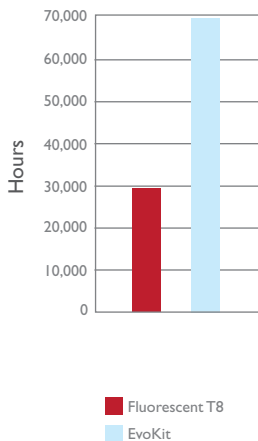
The US Government predicts there are over 2.4 billion linear fluorescent lamps in the market, over 1 billion of which are T12*. Troffers that use T12 consume more energy than necessary and are not sufficient to meet new legislative standards, making them the perfect candidates for the Philips EvoKit LED Retrofit Kits. Installing in less than 5 minutes, the kit will not only improve the look of the ceiling, but also consume much less energy and decrease the cost of maintenance due to its long life. The EvoKit is expected to last 70,000 hours and comes standard with a 5 year warranty (See Philips.com/warranties for details).

Longer Life and Less Energy

Philips EvoKit LED provides many benefits compared to its fluorescent counterpart

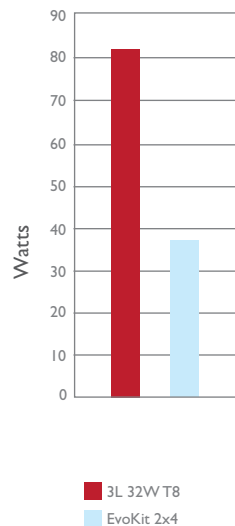
Rated Average Life

230% More Life^{1,2}



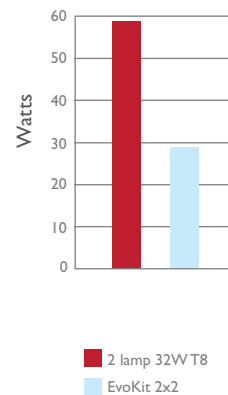
Present Wattage

2x4 Consumes 54% Less Energy³

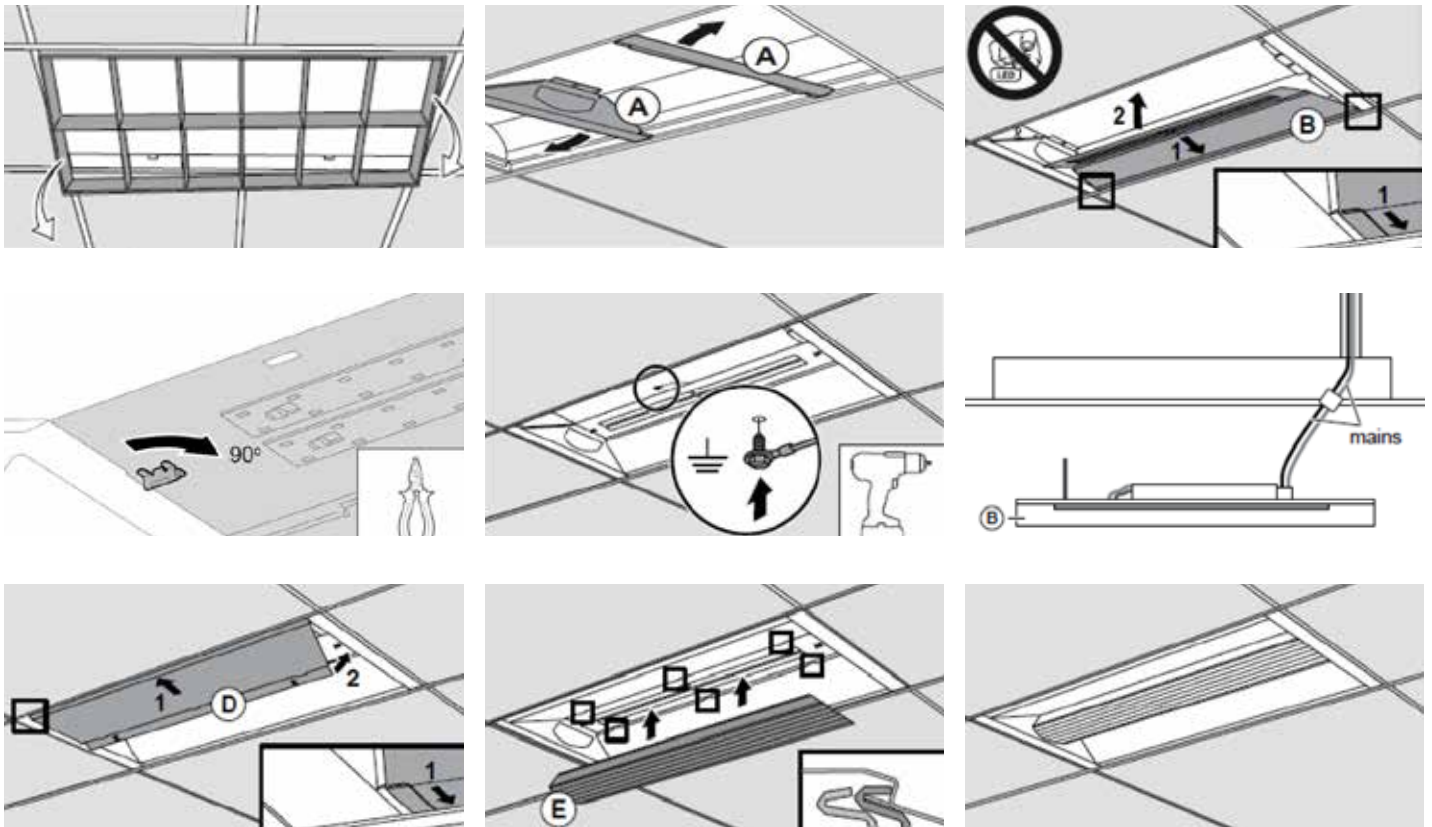


Present Wattage

2x2 Consumes 51% Less Energy⁴



- 1) Lumen maintenance of B50L70 of 70,000 hours @ 35C based on TM21 and LM80
 - 2) Rated Average Life of a fluorescent is the length of operation (in hours) at which point an average of 50% of the lamps will still be operational and 50% will not, assumed at 30,000 hours for a standard F32T8
 - 3) Assumes 3 lamp 32W T8 lamps on a .88 factor ballast consumes 85W of energy compared with the EvoKit 2x4 at 39W
 - 4) Assumes 2 lamp 32W U-bent T8 consumes 59W compared with the EvoKit 2x2 at 30W
- * Source: 2010 US DOE Lighting Market Characterization Report



(See installation guide for full instructions on installing the product)

1. Cut power to host fixture and remove louvers/lens, lamps, belly pan and disconnect mains from ballast
2. Install side panels A in between troffer and T-Grid, sliding outward as far as possible
3. Install LED panel between troffer and T-Grid, fixing tab on panel B through slot hole of panel A
 - a. Twist the fastener 90°
4. Establish ground connection (see installation guide for different scenarios)
5. Connect mains cable and hide connected wires behind LED panel B
6. Install closing panel C between troffer and T-Grid, fixating panels over slots
 - a. Twist the fastener 90° – same as 3a
7. Slide diffuser under tabs on one side and press diffuser over tabs on opposite panel
8. Energize unit

