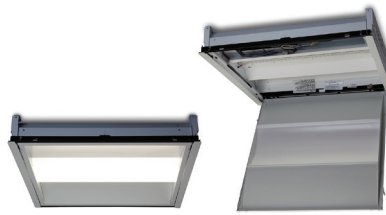


# Refit™ LED Door Kit

2' x 2' Refit Door Kit  
2' x 4' Refit Door Kit



Project name \_\_\_\_\_

Date \_\_\_\_\_

Type \_\_\_\_\_

## Product Description:

Ultimate refit solution serves as an upgrade to Linear Fluorescent Fixture that provides high uniformity, excellent efficiency and reduced glare in 2'x2' and 2'x4' applications. The lumen maintenance at L70 of initial lumens at 50,000 hours of operation, allows lower maintenance costs over time. It is suitable for indoor general lighting.

### Performance Summary 2' x 2':

**Delivered Lumen Output:** 2000lm (4000K), 1950lm (3500K)  
**System Input Power:** 21W  
**Standard Dimming Compatibility:** 0-10V  
**Efficacy:** 93 LPW (4000K), 91 LPW (3500K)  
**Input Voltage:** 120-277V  
**CCT:** 3500K, 4000K  
**Typical CRI:** 80+  
**Color Consistency:** 4 Step MacAdam Ellipse  
**Lifetime Rating:** 50,000 Hours @ L70  
**Input Frequency (Hz):** 50/60Hz  
**Power Factor:** >0.9  
**Dimensions:** 21.9" (L) x 22.5" (W) x 3.4" (H)  
**THD:** <20%  
**Mounting:** Fits most all 2' x 2' standard fixtures  
**Maximum Weight:** 3 lbs  
**Limited Warranty:** 5 Years Standard  
**Files Available:** LM79, LM80, IES

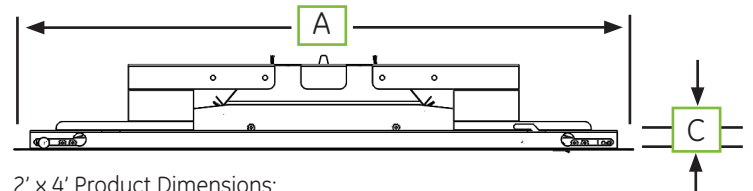
### Performance Summary 2' x 4':

**Delivered Lumen Output:** 4100 lm (4000K), 3900 lm (3500K)  
**System Input Power:** 36W  
**Standard Dimming Compatibility:** 0-10V  
**Efficacy:** 112 LPW (4000K), 106 LPW (3500K)  
**Input Voltage:** 120-277V  
**CCT:** 3500K, 4000K  
**Typical CRI:** 80+  
**Color Consistency:** 4 Step MacAdam Ellipse  
**Lifetime Rating:** 50,000 Hours @ L70  
**Input Frequency (Hz):** 50/60Hz  
**Power Factor:** >0.9  
**Dimensions:** 46.6" (L) x 22.5" (W) x 3.4" (H)  
**THD:** <20%  
**Mounting:** Fits most all 2' x 4' standard fixtures  
**Maximum Weight:** 5 lbs  
**Limited Warranty:** 5 Years Standard  
**Files Available:** LM79, LM80, IES



## Product Dimensions:



2' x 2' Product Dimensions:  
A = 22.5 in (571.5 mm) B = 21.9 in (556.3 mm) C = 3.4 in (86.4 mm)



2' x 4' Product Dimensions:  
A = 46.6 in (1183.6mm) B = 22.5 in (571.5mm) C = 3.4 in (86.4mm)

Certified by:  

Please refer to the DLC QPL website for the latest and most complete information.  
[www.designlights.org/QPL](http://www.designlights.org/QPL)

## Ordering Information:

PRODUCT CODE	DESCRIPTION CODE	DESCRIPTION	MODEL SERIES	CRI	COLOR TEMP (K)	TYPICAL LUMENS	SYSTEM WATTAGE
LED20/DK22/835/10/SO	208160	2x2 Refit Door Kit 835 0-10V SO	Refit 2x2	83	3500	1950	21W
LED20/DK22/840/10/SO	208161	2x2 Refit Door Kit 840 0-10V SO	Refit 2x2	82	4000	2000	21W
LED35/DK24/835/10/SO	208162	2x4 Refit Door Kit 835 0-10V SO	Refit 2x4	83	3500	3900	36W
LED35/DK24/840/10/SO	208163	2x4 Refit Door Kit 840 0-10V SO	Refit 2x4	82	4000	4100	36W

a product of  
**ecomagination™**



imagination at work

# Photometric Data: Refit™ 2' x 4' Door Kit

## 2BY4 ULIES

### CANDLEPOWER SUMMARY

Angle	0°	45°	90°
45°	5618	5746	5951
55°	5363	5623	6005
65°	4958	5591	6326
75°	4215	5915	6885
85°	2478	6074	6890

### ZONAL LUMEN SUMMARY

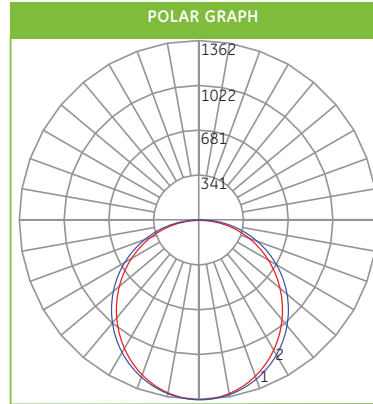
Zone	Lumens
0-10	128.62
10-20	367.85
20-30	555.93
30-40	672.60
40-50	703.09
50-60	648.42
60-70	525.67
70-80	346.88
80-90	118.61
90-100	1.23
100-110	0.81
110-120	0.74
120-130	0.73
130-140	0.77
140-150	0.78
150-160	0.68
160-170	0.46
170-180	0.17

COEFFICIENTS OF UTILIZATION																										
RC	80%					70%					50%					30%					10%					0%
	RW	70%	50%	30%	10%	70%	50%	30%	10%	50%	30%	10%	50%	30%	10%	50%	30%	10%	50%	30%	10%	0%				
0	119	119	119	119	119	116	116	116	116	111	111	111	106	106	106	102	102	102	102	102	102	100				
1	108	103	98	94	105	100	96	93	96	93	90	92	89	87	89	86	84	82	82	82	82	82				
2	98	89	82	76	95	87	80	75	83	78	73	80	75	71	77	73	70	67	67	67	67	67				
3	89	78	69	63	86	76	68	62	73	66	61	70	65	60	68	63	59	56	56	56	56	56				
4	81	69	60	53	79	67	59	52	65	57	52	62	56	51	60	55	50	48	48	48	48	48				
5	75	61	52	45	72	60	51	45	58	50	44	56	49	44	54	48	43	41	41	41	41	41				
6	69	55	46	39	67	54	45	39	52	45	39	51	44	38	49	43	38	36	36	36	36	36				
7	64	50	41	35	62	49	41	35	48	40	34	46	39	34	45	38	34	32	32	32	32	32				
8	59	46	37	31	58	45	37	31	43	36	31	42	35	30	41	35	30	28	28	28	28	28				
9	55	42	33	28	54	41	33	28	40	33	28	39	32	27	38	32	27	25	25	25	25	25				
10	52	39	30	25	51	38	30	25	37	30	25	36	29	25	35	29	25	23	23	23	23	23				

NOTE: Floor Cavity Reflectance : 20%

ZONAL LUMEN SUMMARY			
Zone	Lumens	% of Lamp	% of Fixture
0-20	496.48	N.A.	12.20
0-30	1052.41	N.A.	25.80
0-40	1725.01	N.A.	42.30
0-60	3076.51	N.A.	75.50
0-80	3949.07	N.A.	96.90

Total Luminaire Efficiency = N.A.%



## Product Specifications:

### Construction:

- Durable, long lasting bezel construction. Steel, Electrogalvanized, Cold-rolled, Commercial quality paint coating.
- IP Rating: IP20

### Electrical System:

- Class 2, replaceable, high efficiency LED driver rated for 50,000 hours or more when used within operating conditions.
- THD: <20%
- Transient Protection: 100 kHz ring wave, 2 kV level
- Environmental Testing: High Temperature High Humidity: 60°C /90% (non-condensing)
- Input Current: **2x2**
  - 120V/21W - 141mA
  - 230V/21W - 74mA
  - 277V/21W - 62mA
- 2x4**
  - 120V/36W - 258mA
  - 230V/36W - 135mA
  - 277V/36W - 112mA

### Optical System:

- Precision formed optical assembly comprised of high specularity reflectors, and a transmissive lens in an easily removeable door
- High optical grade lens providing good efficiency and impact resistance
- No visible diodes

### Installation:

- Drivers and internal components accessed via drop down door.
- Suitable for dry locations.

For more information and access to all of our resources, including our design tool visit: [www.gelighting.com](http://www.gelighting.com)



[www.gelighting.com](http://www.gelighting.com)

GE and the GE Monogram are trademarks of the General Electric Company. All other trademarks are the property of their respective owners. Information provided is subject to change without notice. All values are design or typical values when measured under laboratory conditions. GE Lighting and GE Lighting Solutions, LLC are businesses of the General Electric Company. © 2015 GE.

IND182 (Rev 08/31/15)