

# PC/PLC-BASED CONTROLLER KHMI-3000Ex

FOR INTELLIGENT CONTROL

The KHMI-3000Ex is a computer with a 10.4 inch touch sensitive color display housed in a QUANTUM® Series Enclosure for use in Harsh & Hazardous Environments.



**The KHMI-3000Ex  
is certified for use in the  
following locations:**

CLASS I, Divisions 1 & 2, Groups B, C, D

CLASS I, Zones 1 & 2, Groups IIB + H2

CLASS II, Divisions 1 & 2, Groups E, F, G

CLASS III

Enclosure Types 3, 3R, 4, 4X

UL Classified and CSA Certified

ATEX/IEC Ex ①

Ex II 2 G Ex d IIB + H2 T6 or T5

Ex II 2 D Ex tDA21 IP66 80°C or 95°C



3233 W Hunting Park Avenue, Philadelphia PA 19132-1845  
(800) 79-ROYAL (215) 221-1200 fax (215) 221-1201  
advisors@royalelectric.com www.royalelectric.com

**WE GET IT**  
24/7 Emergency Material Access

## FEATURES/BENEFITS

- Now available to the industry is a PC/PLC Based Controller for use in CLASSIFIED HARSH & HAZARDOUS ENVIRONMENTS.
- The large graphical display allows access to real-time data in a clear and easy to understand format.
- Touch screen puts the controls at your fingertips. Eliminates the need for separate control operators.
- Display systems for delivering situational awareness.
- Using standard operating systems such as Windows XP, these PC touch panels merge the capability of commercial products with the ruggedness of the EXB Series Enclosure.
- Standard Industrial PC for easy operation of your existing software.
- For special requirements, custom programming designed to compliment your applications, is available.
- Off the shelf hardware.

① Certifications pending - available April 2009



**KILLARK®**

## PC/PLC-BASED CONTROLLER

# KHMI-3000Ex

## TECHNICAL SPECIFICATIONS

### ELECTRICAL INPUTS

#### POWER SUPPLY REQUIREMENT:

110-240 VAC 50 to 60 Hz

#### COMPUTER COMPONENTS:

1.40 GHz Processor  
400 MHz FSB  
1 MB L2 Cache  
512 MB SDRAM  
256 KB SRAM  
40 GB Hard Drive  
Dual 10Base T Ethernet,  
10/100 MBs  
2 Serial Comm Port

### ENVIRONMENT

#### AMBIENT OPERATING

#### TEMPERATURE:

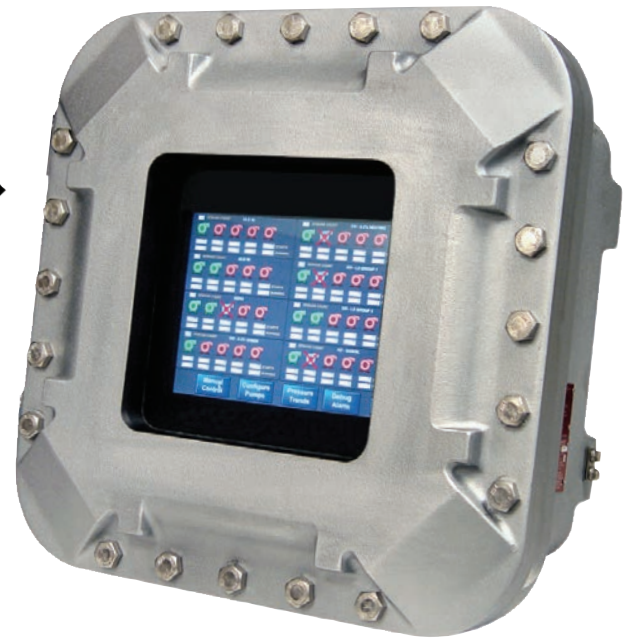
-20°C to 50°C

#### HUMIDITY:

5 to 95% with condensation

#### ENCLOSURE:

EXB Series Enclosures available  
in multiple sizes ranging from  
14 x 14 x 6 through  
24 x 36 x 10 inches



#### For More Information

Contact your local KILLARK®

Sales Representative or

email: [killark@hep.hubbell.com](mailto:killark@hep.hubbell.com)



## KILLARK®

3940 M.L. King Drive, St. Louis, MO 63113

Ph: (314) 531-0460 Fax: (314) 531-7164

[www.hubbell-killark.com](http://www.hubbell-killark.com)



3233 W Hunting Park Avenue, Philadelphia PA 19132-1845  
(800) 79-ROYAL (215) 221-1200 fax (215) 221-1201  
[advisors@royalelectric.com](mailto:advisors@royalelectric.com) [www.royalelectric.com](http://www.royalelectric.com)

**WE GET IT**  
24/7 Emergency Material Access