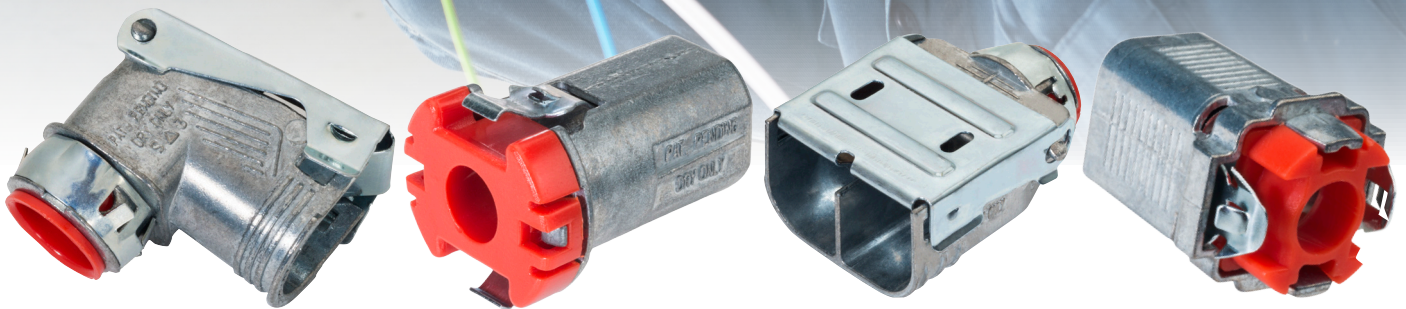


# NEW FROM TOPAZ!



**100DSP & 101DSP**  
**Double Snap Lock 90°**  
**BX Connector**

**130CSL**  
**Cut-In Snap Lock**  
**BX Connector**

**350DSP**  
**Double Snap Lock**  
**Duplex Connector**

**130DSP**  
**Double Snap Lock**  
**BX Connector**

## BX-FLEX-MC Snap Lock Connectors

Topaz's BX-FLEX-MC Snap Lock Connectors are a time saving and cost reducing solution for customers looking to lower project costs. As part of the Topaz line of efficient fittings and quality electrical products, the Snap Lock Connectors enable simple, tool free installation of metal clad or armored cable to steel boxes or enclosures. Designed for a variety of installations, the Snap Lock Connector is available as a Double Snap Lock BX Connector, a Double Snap Lock Duplex Connector, a Double Snap Lock 90 degree BX Connector, and a Cut-In Snap Lock BX Connector. Crafted from durable zinc, the connectors help you see real savings in labor hours as installations become both faster and easier to accomplish! Confidently backed by the Topaz lifetime guarantee, always in stock and available for fast delivery, Topaz Fittings and Electrical Products are built to last and designed to help improve your bottom line.



3233 W Hunting Park Avenue, Philadelphia PA 19132-1845  
(800) 79-ROYAL (215) 221-1200 fax (215) 221-1201  
advisors@royalelectric.com www.royalelectric.com

**WE GET IT**  
24/7 Emergency Material Access



# BX-FLEX-MC

## Snap Lock Connectors

### Features

- Topaz Snap Lock Connectors provide significant labor savings when installing metal clad or armored cable versus traditional installation methods
- Tool free; no tools are required when installing cable to steel boxes or enclosures or to remove the Snap Lock Connector after installation
- The anti-short bushing is pre-assembled and will not fall out during transit or installation
- Simply snap the cable to the fitting and snap the fitting into the box

### Product Advantages

- Faster, easier installation
- No tools required
- Robust, pre-assembled anti-short bushing
- Easy removal
- The Double Snap Lock BX and Cut-In Snap Lock BX feature a one piece design and are reusable

### Standard Material

- Die cast zinc
- Spring steel
- Polycarbonate bushing

### Technical Info

- Fit's 1/2" knockout
- AL and Steel AC 14-2 to 10-3
- AL and Steel MC/MCI-A/HCF 14-2 to 10-3; the Double Snap Lock 90° BX is AL and Steel MC/MCI-A/HCF 14-2 to 10-4
- AL and steel 3/8" RWFC



### Order info

Item #		UPC	Trade Size	Unit Ctn.	Ship Case	Weight Case
350DSP	Double Snap Lock Duplex Connector	87125	3/8"	50	500	56
100DSP	Double Snap Lock 90° BX Connector	87123	3/8"	25	250	19
101DSP	Double Snap Lock 90° BX Connector	87124	1/2"	25	200	22
130DSP	Double Snap Lock BX Connector	87121	3/8"	50	200	10
130CSL	Cut-In Snap Lock BX Connector	87122	3/8"	50	500	31