

FALL BACK ON TORK®



Daylight Saving Time ends soon and you will need to adjust your time switch.

The TORK® EW Series **does it automatically!**



**TORK
EW120B**

WARNING: Risk of electric shock: If wiring compartment inside is not properly installed.

CAUTION: Before wiring and servicing, power to this time switch and the equipment it controls must be turned off at the main panel. Replace this insulator after wiring.

AVERTISSEMENT: Avant de procéder à l'installation électrique ou à son entretien, le courant de l'interrupteur de la minuterie et de l'équipement qu'il contrôle doit être débranché au panneau principal. Remettre cet isolateur en place une fois le câblage terminé.

PRECAUCION: Antes de conectar o dar servicio a este aparato se deberá desconectar desde el interruptor principal al alimentación de energía eléctrica, tanto del - Interruptor Horario, así como del equipo que controla. Favor de colocar esta protección en su lugar después de realizar las operaciones de alambrado.



3233 W Hunting Park Avenue, Philadelphia PA 19132-1845
(800) 79-ROYAL (215) 221-1200 fax (215) 221-1201
advisors@royalelectric.com www.royalelectric.com

WE GET IT
24/7 Emergency Material Access

EW SERIES

Multipurpose Control
1 or 2 Channel 7 Day Time Switch



TORK® IS A BRAND OF
NSi INDUSTRIES, LLC
800.321.5847 • www.nsiindustries.com

Timing Everything.



EW SERIES

MULTIPURPOSE CONTROL
1 OR 2 CHANNEL
7 DAY TIME SWITCH



**AUTOMATIC DST - SAVES TIME
CHANGES TWICE A YEAR**

APPLICATIONS



- Outdoor signs
- Lighting security
- Heating and air conditioning



CALIFORNIA Title 24

ASHRAE 90.1

FEATURES

SCHEDULING: 20 ON & OFF set points for individual programs for each day of the week. Minimum setting is 1 minute.

DAYLIGHT SAVING:
Automatic (can be omitted).

LEAP YEAR: Automatic Compensation.

MANUAL OVERRIDE: Until the next regularly scheduled ON or OFF, automatic operation then resumes.

CLOCK FORMAT: AM/PM.

POWER OUTAGE BACKUP: Permanent schedule retention. Supercapacitor provides 4 days of real time backup.

MOMENTARY OPTION: For mechanically held contractors: Model EW201B only. Configure with simple jumper change for single-channel momentary operation.

ORDERING INFO

CATALOG NO.	UPC CODE	INPUT SUPPLY (VAC) 50/60Hz	NO. OF CHANNELS	OUTPUT DRY CONTACTS
EW101B	82431	120-277	1	SPST
EW103B	82441	120-277	1	DPST
EW120B	82436	120-277	1	SPDT
EW201B	82467	120-277	2	SPST
EW103B-C	82253	120-277	1	DPST
EW103B-Y	82255	120-277	1	DPST
EW120B-C	82437	120-277	1	SPDT
EW120B-Y	82261	120-277	1	SPDT
EW201B-Y	82299	120-277	2	SPST

SPECIFICATIONS

TIMING ACCURACY: Line Frequency.

INPUT VOLTAGE:

120 - 277VAC, 50/60Hz (automatic detection).

TERMINAL RANGE: #8 - #16AWG.

OPERATING TEMPERATURE:

-40° to +149° (-40° to +65°C).

POWER CONSUMPTION: 6VA Max.

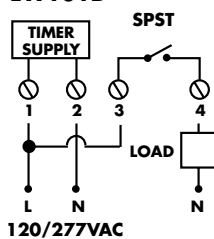
ENCLOSURE: Plastic Indoor/Outdoor NEMA 3R. Suffix -C plastic clear cover Indoor/Outdoor NEMA 3R. Suffix -Y metal Indoor enclosure NEMA 1. All with lockable hasp (see page 153 for enclosure dimensions).

CONTACT RATINGS

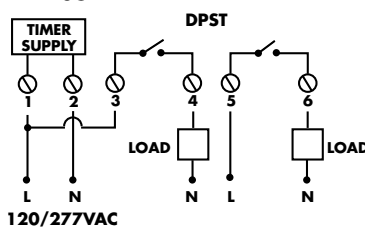
TYPE	EW101B, EW103B, EW201B		EW120B		
	VOLTAGE	RATING NO	VOLTAGE	RATING NO	RATING NC
General Purpose	120-277VAC	40A	120-277 VAC	30A	30A
Inductive	120-277VAC	40A	120-277 VAC	30A	30A
Ballast	120VAC	30A	120VAC	30A	10A
	208-277VAC	20A	208-277VAC	20A	10A
Tungsten	120VAC	15A	120VAC	15A	2A
Pilot Duty	120-277VAC	720VA	120-277 VAC	720VA	720VA
	120VAC	1HP	120VAC	1HP	1HP
	208VAC	1½HP	208VAC	1½HP	1½HP
Motor	240-277VAC	2HP	240-277VAC	2HP	2HP
	Resistive	28VDC	30A	28 VDC	30A

WIRING DIAGRAMS

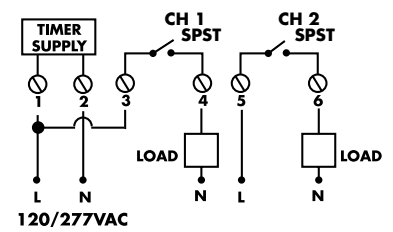
EW101B



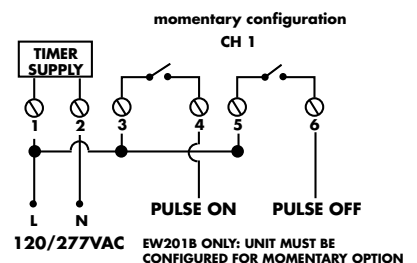
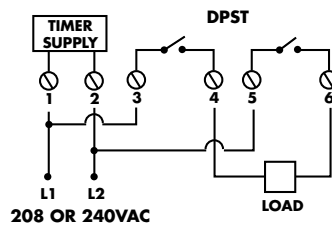
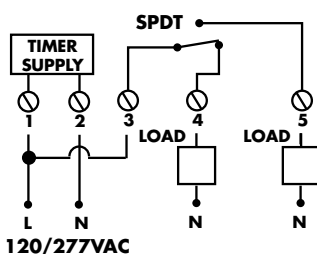
EW103B



EW201B



EW120B



SPECIFICATION WRITER'S GUIDE

EW SERIES – 1. Furnish and install a TORK digital time switch with (40 Amp SPST contacts, model EW101B, EW210B) (40 Amp DPST contacts, model EW103B) (30 Amp SPDT contacts, model EW120B). 2. Unit shall be capable of 20 set points. 3. Unit shall be capable of a different schedule each day of the week. 4. (Model EW201B ONLY) Unit shall be capable of being a 2 channel maintained or a 1 channel momentary. 5. Unit shall have automatic Daylight Savings Time and Leap Year compensation. 6. Unit shall program in AM/PM format. 7. Unit shall have LCD display. 8. Unit shall have permanent schedule retention. 9. Unit real time clock shall be retained by super capacitor for 100 hours in a power failure. 10. Unit shall be capable of manual override ON or OFF either to the next scheduled event or permanently. 11. Unit shall have a NEMA 3R Indoor/Outdoor plastic enclosure. 12. Unit shall have Load Status indication. 13. Unit shall have Power Failure indication. 14. To order specify TORK Model EW101B (EW103B) (EW120B) (EW201B).