



ROYAL ELECTRIC SUPPLY COMPANY

Solutions Through Relationships—Since 1919



Social Distancing Product Catalog

ORGANIZATIONS
will need to have
a new appreciation
for the importance of

THE OFFICE,

the critical nature
of face-to-face
INTERACTIONS
and the ways their

WORKPLACES
must support
EMPLOYEES.

Tracy Brower, Forbes

Social Distancing Products

Tabletop Wellness Screens	4
Hanging Wellness Screens	6
Table Divider Wellness Screens.	7
Floor Graphics	8
Freestanding Signs	10
Poster Holders.	12
Vinyl Banners.	13
Workplace Coronavirus Preparation	14
Planning.	15

Bringing A Brand to Life

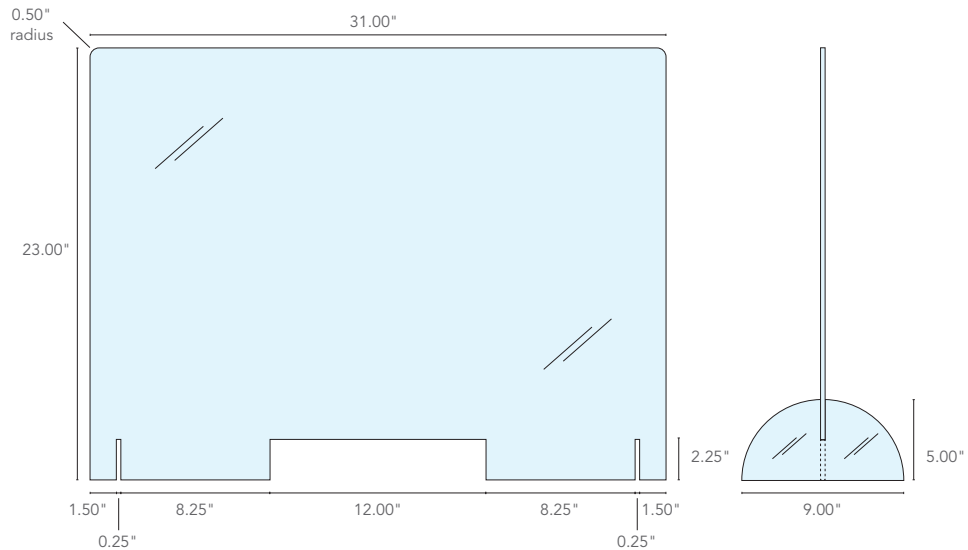
To illustrate the importance of branding integration into social distancing products, we have conceptualized the Bubbel logo, design, and name into our offerings on the following pages.

Wellness Screens

Wellness screens, also known as sneeze guards, assemble in seconds, sliding into varying base options with little to no hardware required. Available with or without pass-through slots, the screens are an effective physical barrier against COVID-19. Corners are rounded for added safety. Securing bases to tabletops or desks is also an option using double-face tape, screws or clamps.

The customization of screens is also available by size and mounting method as well as the acrylic thickness. Additionally, depending on the size of the screen, logos and/or privacy graphics can be etched into the acrylic. For further integration into the environment's interior design, consider a shaped edge on the wellness screens.

Specifications

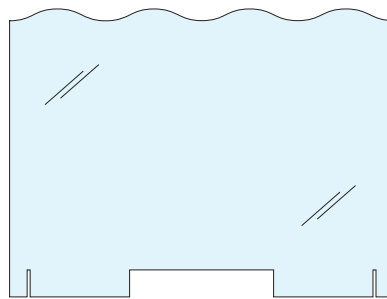


WSH HORIZONTAL FREESTANDING WELLNESS SCREEN

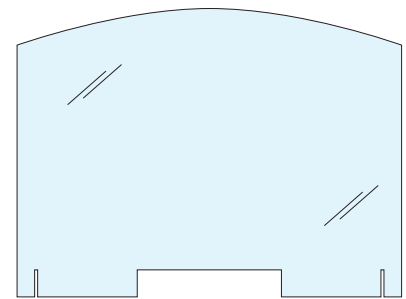
- 31.00" wide x 23.00" high* with 0.50" radius rounded corners
- Available with or without a pass-through slot
- Available in 1/8" or 1/4" thick clear acrylic
- Acrylic feet available in clear, white, or black

* Size is based on maximizing the number of screens that can be cut out of a full sheet of clear acrylic and eliminating waste on this high-demand product.

SHAPED EDGES



Wave Edge

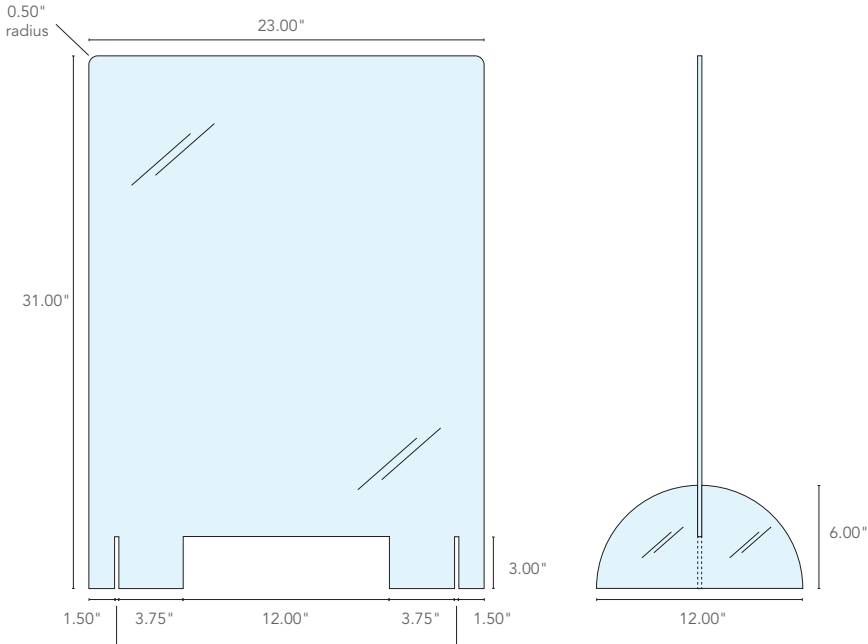


Arch Edge

HIGH DEMAND

Clear acrylic is in VERY high demand. Therefore, **supply and demand will dictate the thickness of material being used** and will range from 0.177" to 0.22" nominal. Suspended signs may be thinner due to the decreased structural strength required.

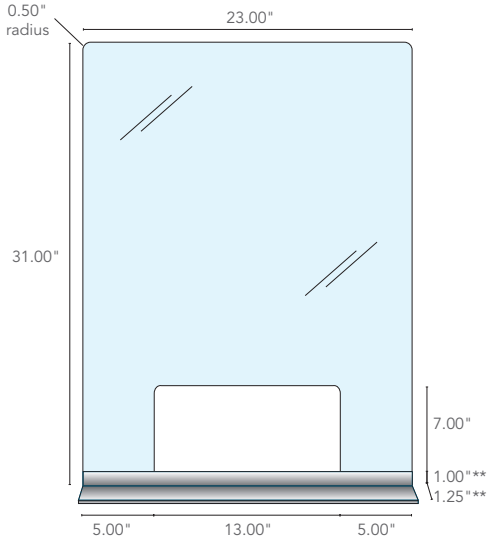
Delivery dates will vary and will be based on the availability of supply. We will confirm a delivery date to the best of our abilities within 48 hours of receipt of order. Delivery dates may be subject to change.



WSV VERTICAL FREESTANDING WELLNESS SCREEN

- 23.00" wide x 31.00" high* with 0.50" radius rounded corners
- Available with or without a pass-through slot
- Available in 1/8" or 1/4" thick clear acrylic
- Acrylic feet available in clear, white, or black

* Size is based on maximizing the number of screens that can be cut out of a full sheet of clear acrylic and eliminating waste on this high-demand product.



WSVB VERTICAL WELLNESS SCREEN WITH BASE

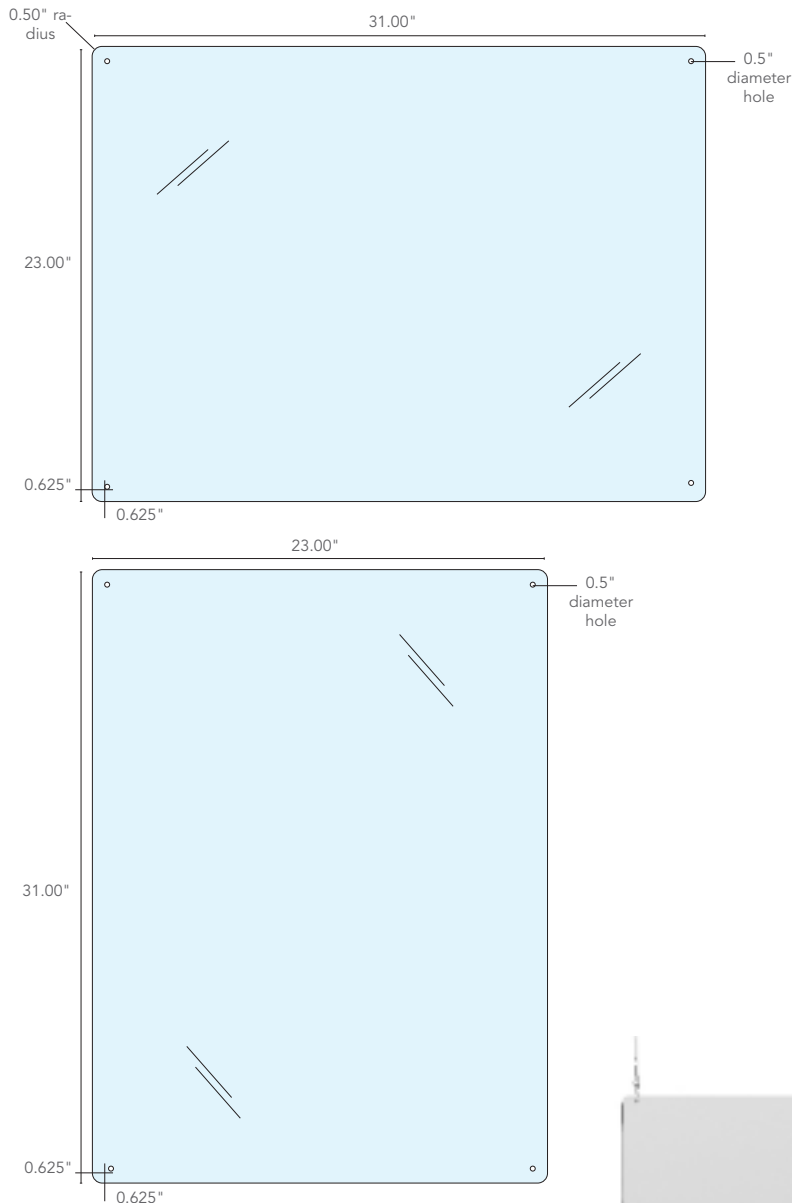
- 23.00" wide x 31.00" high* with 0.50" radius rounded corners
- Available with or without a pass-through slot
- Available in 1/8" or 1/4" thick clear acrylic
- Base is satin silver

* Size is based on maximizing the number of screens that can be cut out of a full sheet of clear acrylic and eliminating waste on this high-demand product.



**Base dimensions and design may vary based on availability

Hanging Wellness Screen Specifications



WSC HANGING WELLNESS SCREEN

- 31.00" wide x 23.00" high* with 0.50" radius rounded corners
- Can be hung horizontally or vertically
- Available in 1/8" or 1/4" thick clear acrylic
- Cable and hooks for hanging also available

* Size is based on maximizing the number of screens that can be cut out of a full sheet of clear acrylic and eliminating waste on this high-demand product.



CUSTOM STRUCTURES AVAILABLE

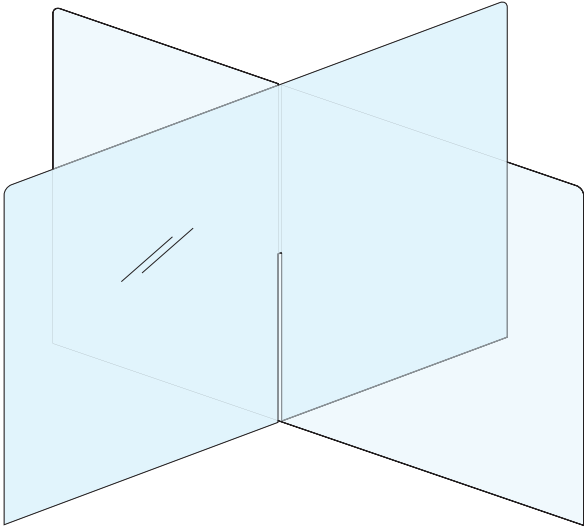
If the wellness screens on pages 2-4 do not meet the specific needs of your workplace COVID-19 requirements, please contact us for a custom structure configuration. No project is too big or too small. **Creating a structure that is expertly and beautifully integrated into your environment is our goal.**

Please note that clear acrylic is limited to a 48" x 96" sheet; however, we have many solutions to adjoin acrylic for a safe and secure screen of any length.

For additional branding and customization options, privacy graphics and logos are available to be etched into the clear acrylic — depending on size.

A minimum of 48 hours for concept and quoting is required for all custom structure designs.

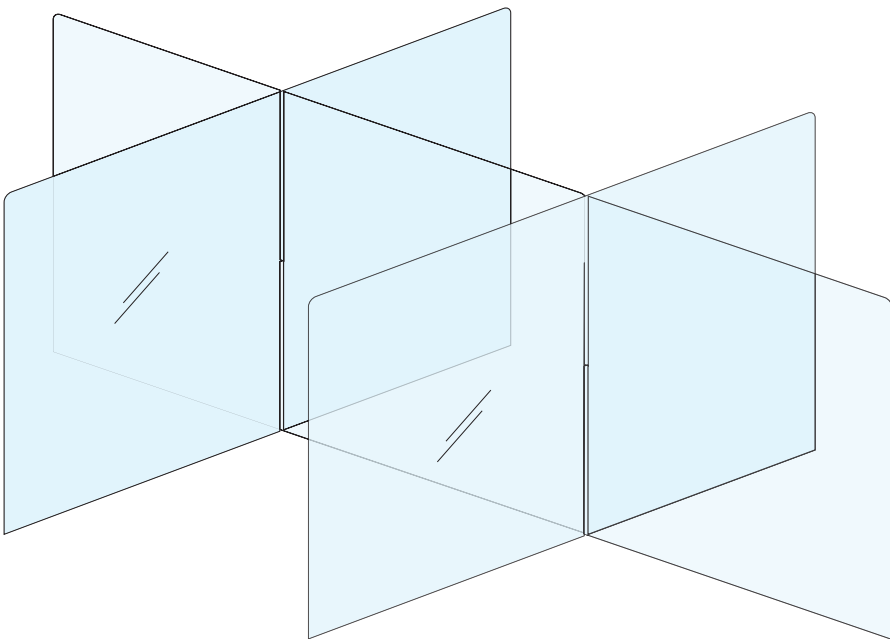
Table Divider Specifications



WSD4 WELLNESS SCREEN DIVIDER

- Each panel is 31.00" wide x 23.00" high* with 0.50" radius rounded corners
- Creates four divided spaces
- Table length may require adjustment of panel sizes
- Available in 1/8" or 1/4" thick clear acrylic
- Shipped flat and assembled on site

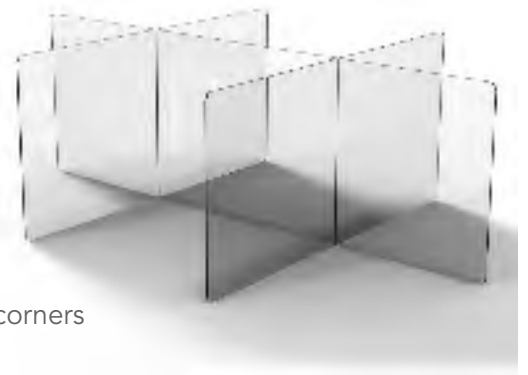
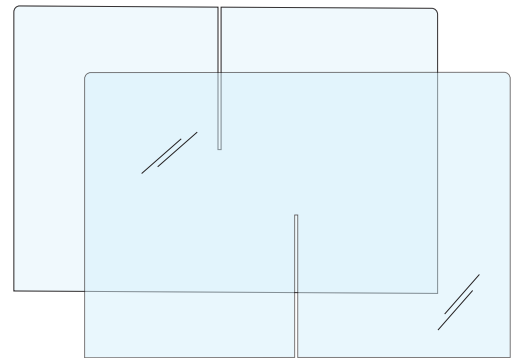
* Size is based on maximizing the number of screens that can be cut out of a full sheet of clear acrylic and eliminating waste on this high-demand product.



WSD6 WELLNESS SCREEN DIVIDER

- Two cross panels are 47.50" wide x 23.00" high* with 0.50" radius rounded corners
- The center panel is 71.50" long* with 0.50" radius rounded corners
- Creates six divided spaces
- Table length may require adjustment of panel sizes
- Available in 1/8" or 1/4" thick clear acrylic
- Shipped flat and assembled on site

* Size is based on maximizing the number of screens that can be cut out of a full sheet of clear acrylic and eliminating waste on this high-demand product.



Floor Graphics

Our floor graphic stickers will help promote social distancing so that individuals can remember how a small change on their part can make a big positive impact on the health and safety of their community.

These important attention-grabbing, adhesive floor graphics are durable enough for regular foot traffic, semi-permanent on flat surfaces, and feature a slip-resistant coating. Easily installed on hardwood, tile, laminate, sealed concrete, and other non-porous surfaces, including low-pile carpet. Let customers and others know where to wait in line or as a general reminder to practice social distancing of at least six feet.

Specifications



FGC Sold in a package of 15



FGS Sold in a package of 15

FLOOR GRAPHICS

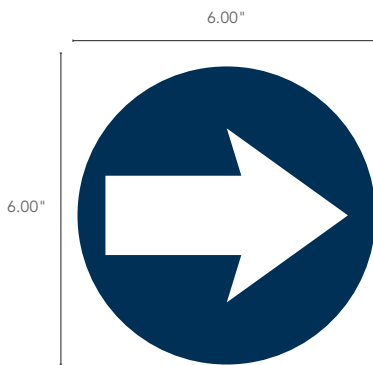
- Durable and slip-resistant
- Available in any color combination
- Calculate the number needed based on placement every six feet
- Can be custom designed to incorporate brand messaging and logos

TABLE OR COUNTERTOP GRAPHICS

The 12" round diameter and 12" square floor graphics are also available as tabletop or countertop adhesive decals for use in corporate boardrooms, conference rooms, or cafeteria environments as a reminder to practice social distancing while seated and/or dining.

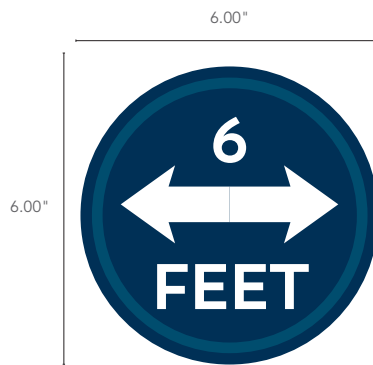
DO THE FIVE!

1. **HANDS** WASH THEM
2. **ELBOW** COUGH INTO IT
3. **FACE** DON'T TOUCH IT
4. **FEET** STAY 6FT APART
5. **FEEL** SICK? STAY HOME



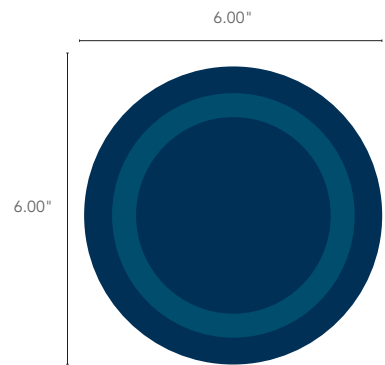
FGC6A Sold in a package of 30

- Ideal for use between larger floor graphics to indicate flow of traffic or in smaller spaces



FGC6B Sold in a package of 30

- Ideal for use in restrooms behind sinks or on mirrors



FGC6C Sold in a package of 30

- Ideal for use between larger floor graphics to indicate flow of traffic



FGR Sold in a package of 26



FGA Sold in a package of 26

FLOOR GRAPHICS

- Durable and slip-resistant
- Available in any color combination
- Calculate the number needed based on placement every six feet
- Can be custom designed to incorporate brand messaging and logos

Freestanding Signs

Coronavirus signs allow a business to share important health and safety information. Providing individuals with pertinent information is as important as ever. Signs warn, educate, alert, inform, and direct. Our freestanding signs are the perfect option for areas where there is not adequate wall space to hang a sign or where a larger freestanding sign will make a greater impact.

All of our freestanding sign options are portable and can be quickly and easily moved from one area to the next as needed. Make sure everyone in your facility is aware of what they can do to help prevent COVID-19 by placing these signs throughout the workplace.

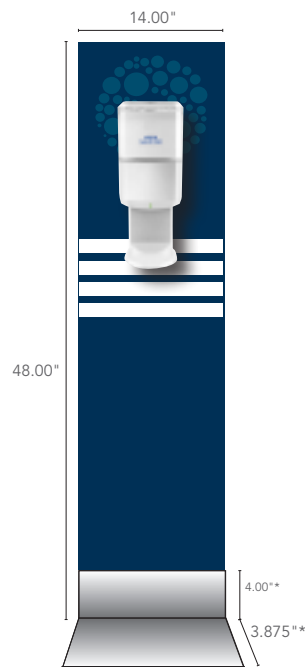
Specifications



FSL FREESTANDING LARGE SIGN

- 23.50" wide x 60.00" high as shown
- Base is 4-1/4" h, 7-3/4" front to back*
- Sits flat on any surface
- Base is satin silver
- Sign substrate is 1/2" thick mighty core and includes a single sided printed face
- Available in any color combination and can be branded or customized with your graphics or ours
- Varying widths available
- Stand can be used with graphics up to 7' high
- Designed to withstand high traffic areas

* Base dimensions and design may vary based on availability

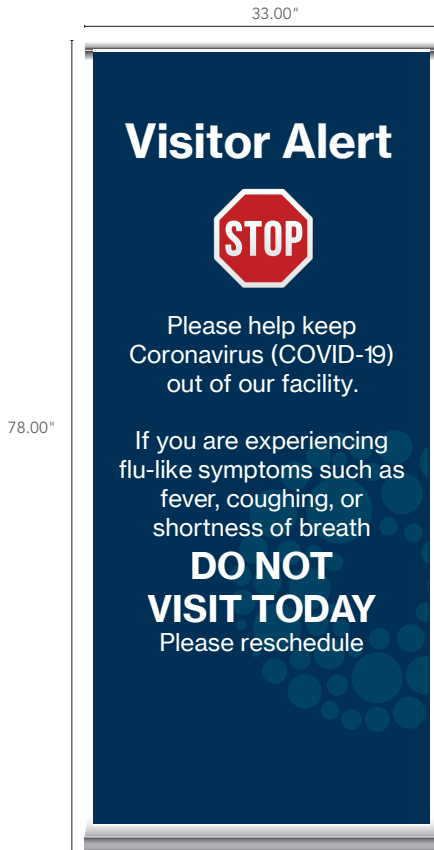


FSS FREESTANDING SMALL SIGN OR SANITIZING STATION**

- 14.00" wide x 48.00" high
- Base is 4-1/4" h, 7-3/4" front to back*
- Sits flat on any surface
- Base is satin silver
- Sign substrate is 1/2" thick mighty core and includes a single sided printed face
- Available in any color combination and can be branded or customized with your graphics or ours
- Varying widths available
- Designed to withstand high traffic areas
- To be used with automatic dispensers

* Base dimensions and design may vary based on availability

** Dispensers and sanitizer not included



FSRB FREESTANDING RETRACTABLE BANNER

- 33.00" wide x 78.00" high
- Requires very little assembly
- Lock the poles in place and then attach the banner
- Printed on vinyl
- Smooth and water-resistant finish
- Wide aluminum base for extra support
- Portable and easy to transport

This is a great option allowing for the ability to switch out the graphic banner as the stages and messaging of COVID-19 changes or to add a branding or marketing message.

ADDITIONAL SIGN OPTIONS

If the freestanding signs on these pages do not meet your size requirements or if you have the need for a specific type of sign, please contact us for options and for a quote.

Consider all the areas of a building where signs are needed. This includes entrances and exits, reception desks, cafeterias, breakrooms, conference rooms, restrooms, and elevators or stairs.



FSAF FREESTANDING A-FRAME SIGN*

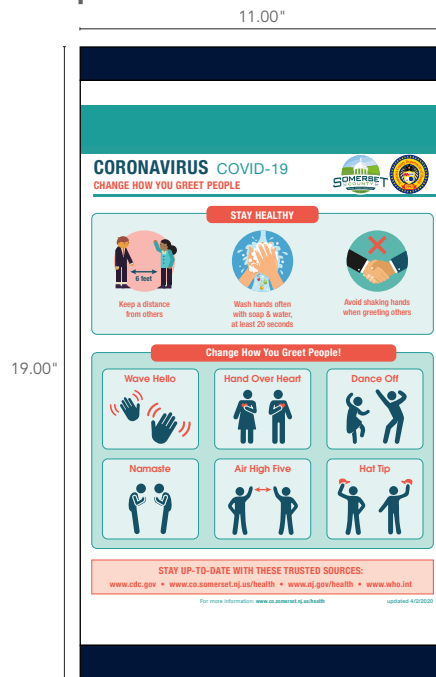
- 22.00" wide x 60.00" high
- Requires very little assembly
- Lightweight and strong, but portable and effective
- Ships flat
- Tool-free assembly

*A-frame design may vary based on availability of materials

Poster Holders

Similar to our freestanding signs, poster holders allow your business to share important health and safety information related to COVID-19. These poster holders allow for **quick and easy interchangeability**, which is helpful during this time when messaging is constantly changing. The poster or sheet of paper can be removed from the right or left side and is protected behind clear acrylic.

Specifications



TPH TABLOID POSTER HOLDER

- 11.00" wide x 19.00" high
- Holds an 11" x 17" poster
- Available in any color combination
- Attached to wall with double-face tape or to glass with a glass backer



LPH LETTER POSTER HOLDER

- 8.50" wide x 12.00" high
- Holds an 8.5" x 11" poster
- Available in landscape or portrait
- Available in any color combination
- Attached to wall with double-face tape or to glass with a glass backer

ARCHITECTURAL SIGNS SERIES

Clarke Systems entire line of interior architectural signs are also always available and hold posters, flyers, and other paper inserts. Please visit our website for all the information on designs, colors, and sizes available. Custom designs are also available.

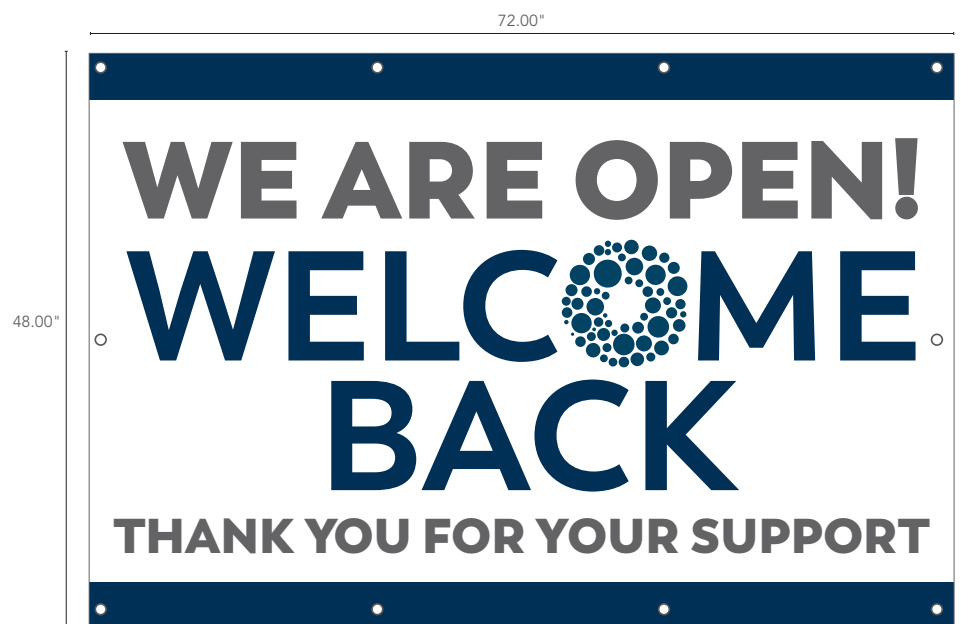
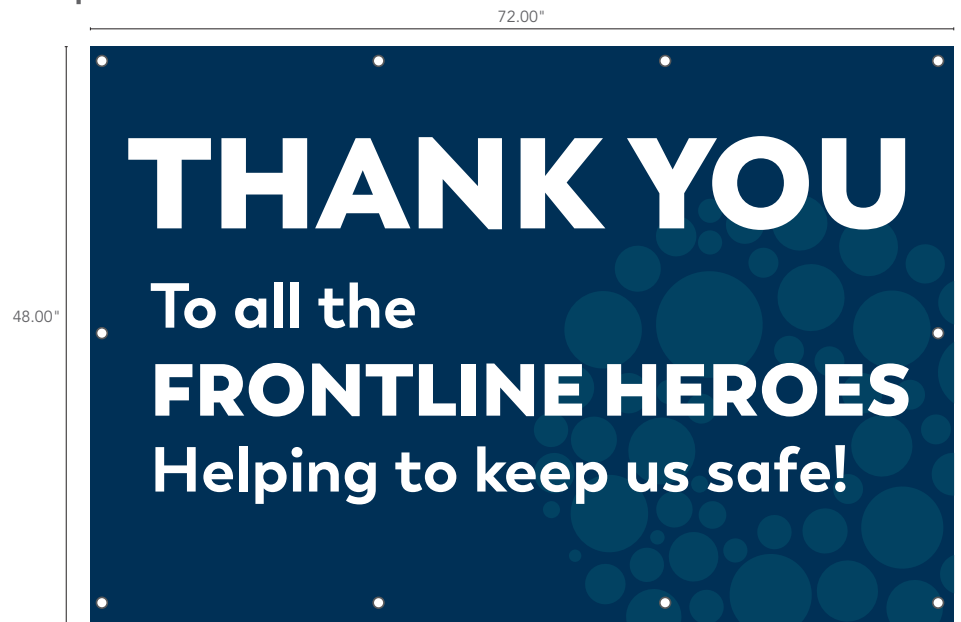
Vinyl Banners

A banner is the perfect way to welcome your employees back or to thank all those who have been on the front lines during the pandemic. These vinyl banners are also a great option to hang outside the building to announce reopening.

Our banners are **safe to be hung both indoors and out** and have grommets every 24.00" to keep them secure in any weather.

While the 72.00" x 48.00" size banner is standard, **we can meet any of your size requirements** with a custom design created specifically for your company.

Specifications



VB VINYL BANNER

- 72.00" wide x 48.00" high
- Indoor or outdoor safe
- Grommets every 24.00"
- Available in any color combination
- Attached to wall with double-face tape or to glass with a glass backer

Workplace Coronavirus Preparation

Preparing workplaces to reopen in the coming weeks and months will have many requirements. The Clarke Systems team has formulated a methodology for designing this new office environment. We can assist with labeling any floorplan accordingly with the numbers below to help indicate the areas requiring wellness screens, preventative reminders and sanitizer stations, etc.

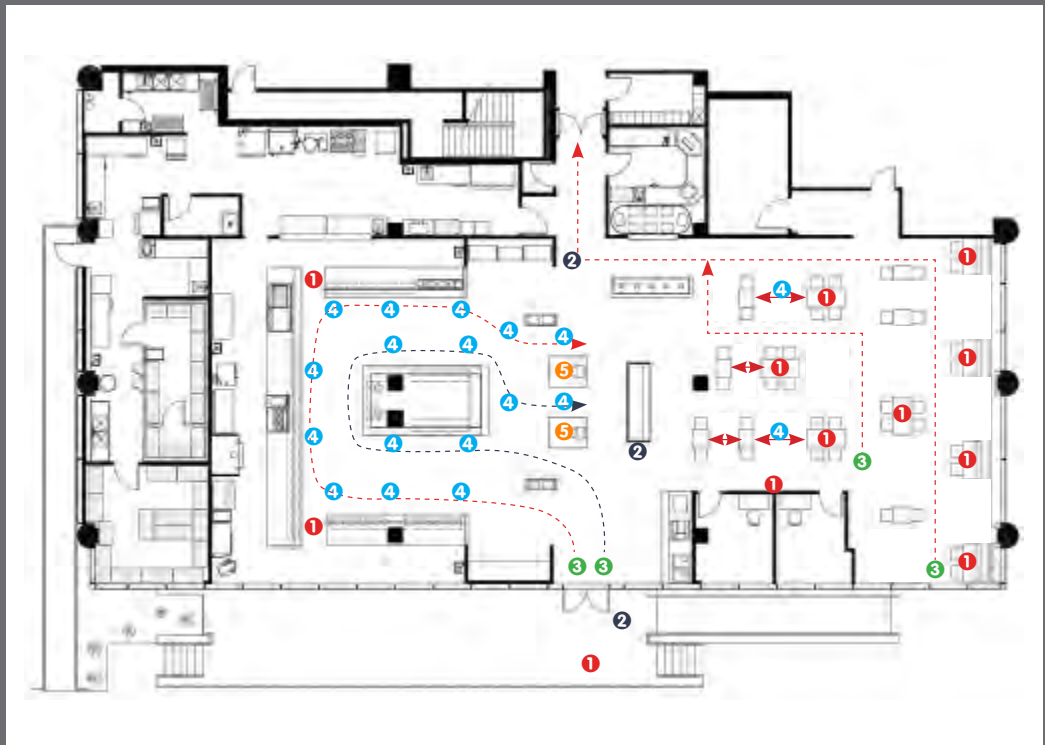
1
**INFORM,
REMINDE &
ENCOURAGE**

2
CLEAN

3
FLOW

4
DISTANCE

5
SHIELD



IMPORTANT NOTES

- Multilingual messaging is an option
- Inform, remind and encourage messaging is available as a vinyl application on table tops
- Spacing tables and chairs is necessary
- Graphics can be branded with corporate culture messaging
- Modular fixtures may require relocation for better flow

Planning



1 INFORM, REMIND & ENCOURAGE

Use signage and posters on walls, pillars, and other large flat areas to inform employees and guests of the coronavirus policies for your facility.

2 CLEAN

Provide hand sanitizer or wipe stations throughout your office space.

3 FLOW

Direct guests on a path that will ensure proper social distancing throughout your office.

4 DISTANCE

Floor graphics are an effective reminder to maintain a minimum six foot space between people while waiting in line, etc.

5 SHIELD

A wellness screen (sneeze guard) is an imperative protective shield against the COVID-19 virus and should be used in all areas of a facility where two people will face one another in discussion or to complete a transaction.



Royal Electric Supply Company
Philadelphia PA
www.royalelectric.com/covid

(800) 797-6925
(215) 221-1200
covidsigns@royalelectric.com